



# Galloway Annual 2019 - 2020

Australian Galloway Association



***AGA Members Out and About...***

# President's Report

## Shane Smeathers

Welcome to the Australian Galloway Association 2019-20 Annual.

It's been another very hard year across a lot of Australia with little to no rain, and I can fully understand a lot of you not feeling optimistic for this to change any time soon. This drought has been recorded as the worst drought in Australia's history, and who really knows when it's going to end.

I do worry the longer this drought continues that it will have an effect on breed numbers and genetic material in general. Great to still see that despite the current conditions there are many new members joining the Association and acquiring cattle; a very warm welcome to you all.

2019 saw a very successful Galloway Family Feature Breed at Canberra Royal Show in February, with a record breaking number of exhibits entered. The event was live streamed and if you missed being there a copy of all classes in video form is on the Australian Galloway Association's facebook page.

Galloway Family cattle are still doing well across our carcass competitions and feed trials! Well done to our members and the people involved.

2020 will see the next World Galloway Congress, held in Louisville Kentucky, USA, from the 14th to the 20th November. This will be a great opportunity to meet Galloway breeders from all around the world and

take advantage of some great hospitality.

Members please, when receiving correspondence from the Association office, take the time to read it, as the information is keeping you up to date with the requirements, or any changes to the rules of the Association, and it is your responsibility as breeders to keep on top of this. If at any time you change your email address or postal address please let the office know asap so details can be updated.

When you are requiring promotional material for shows, field days and farm visits, make sure you let the office know well before the event to allow for postage delivery timeframes to get your items to you in time.

In this year's Annual you will see that we have caught up with some of the younger members of the Association we featured last year, and we also have pleasure in introducing you to some more. Young people are the way forward in the cattle industry and we need to encourage them to pursue their dreams.

Thank you to the Committee and all Association members for the hard work you do in promoting the Galloway Family. Your Association prides itself in the promotion of Galloways, Belties, and miniature Galloways.

*Shane Smeathers*

### **Australian Galloway Association**

PO Box 42, Westbury, Tasmania, 7303

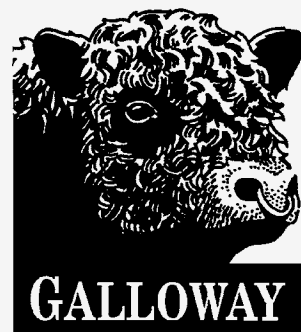
P: 0400 952 510 Int: +61 400 952 510

E: office@galloway.asn.au

**www.galloway.asn.au**

## Contents

Committee	2
Jalaway Belted Galloway Stud	3
The Association - Past and Present	5
Bull Soundness and Structure	7
Out and About	12
Royal Canberra Show	14
Members List	18
Young Members	25
Ode to a Cow	27
UK Galloway Road Trip	29
Royal Show Roundup	31
Agistment Guidelines	33
Semen List	34



# Australian Galloway Association Inc.

## Committee Members



**President**  
 Shane Smeathers  
 199 Hayes Road  
 Millfield NSW 2325  
 M: 0438 934 983  
 E: traditionalgalloways@hotmail.com



**Vice President**  
 Malcolm Cock  
 163 Ryans Road  
 ELTHAM NORTH VIC 3095  
 P:03 9444 1112  
 M:0418 316 009  
 E:farmdynamics@dcsi.net.au



**Treasurer & Vice President**  
 Baden Geeves  
 12340 D'aguilar Highway  
 Yarraman Qld 4614  
 P: 07 4163 8652  
 M: 0417 859 799  
 E: freedomrise@bigpond.com



**Committee**  
 Ian Bull  
 1199 Carbone Road  
 CORBIE HILL NSW 2715  
 P:02 6955 6355  
 M:0428 723 184  
 E:bullie49@bigpond.com



**Committee**  
 Pam Brown  
 P:0434 100 280  
 E: pamjbrown@exemail.com.au



**Committee**  
 Josh Keech  
 CEDAR BRUSH CREEK NSW 2259  
 M: 0413 644 604  
 E: office@windarroofarm.com



**Committee**  
 Sam Reynolds  
 442 Henry Lawson Way  
 Young NSW 2594  
 M: 0400 251 508  
 E: sambo\_reynolds@hotmail.com



**Committee**  
 Sallie Wadley  
 3480 Meander Valley Road  
 Westbury Tas 7303  
 P: 03 6393 1253  
 M: 0428 974 718  
 E: springrises1@bigpond.com

### Advertisers Index

<i>Agspand Feedchar</i>	28	<i>Lazy B Stud</i>	21
<i>Balytyckle Miniature Galloways</i>	28	<i>Mbuyanhanda Stud</i>	30
<i>Clan Woolfe Belties</i>	6	<i>Murrinoak Miniature Galloways</i>	30
<i>Freedom Rise Miniature Belted Galloways</i>	6	<i>NRG</i>	12
<i>Glenblairie Belted Galloways</i>	11	<i>Spring Rises Belted Galloway Stud</i>	27
<i>Gleneagles Miniature Galloways</i>	34	<i>The Cattle Shop</i>	26
<i>Karandrea</i>	23	<i>Torcroft Miniature Galloways</i>	30
<i>Killure Miniature Belted Galloways</i>	30	<i>WFI</i>	28

## Year Tattoo

2019: Q

2020: R

2021: S

# Jalaway Belted Galloway Stud

*Established in 2001, Jalaway Belted Galloways is run by Ali Hilli, and this is her story...*

Ali and her family ran commercial steers and cross bred females on their small farm in Main Ridge, Victoria. A long held ambition to show cattle, something that could be done as a family, led to the decision to change their herd to stud cattle, and Belted Galloways were their breed of choice. Initially attracted to the moderate size, quiet temperament and eye appeal of these animals they did not realise that they were oh... so much more!

Jalaway Stud's foundation female was Rowsley Park Monique, with this wonderful heifer becoming the founder of the Bonnie Family at Jalaway; a family that still continues today in the herd.

Taking the plunge into the show scene with their the Belties, the first few local shows were major learning experiences.

Ali said she had no idea what a cattle blower was, much less that cattle could be clipped to improve their appearance! Melbourne Cattle Handler's Camp and a weekend course with Ian Moreland, a long term stud cattle professional, soon opened her eyes up to some of the intricacies of showing cattle.

Over the years Jalaway cattle have often been found in the winners circle and there have been many champions from each of the foundation cow families.

The learning continued and the herd expanded with a number of other females purchased from other Beltie studs. The move to Willow Grove in Gippsland and a larger farm of 112 acres in 2008 enabled the herd to continue to grow. The long established herd of Bellandean, at Flinders, Vic, offered the opportunity to add one female from each of their top breeding cow lines. These genetics and those of Montrose and Cumbria are still very



*Succulent Jalaway beef*

successful in the herd today. Some other lines were not as successful and so were not continued. Later on, the addition of animals from Clanfingon, Manoora Park and Glenmerritt enhanced the breeding program. Very recently Ali has been lucky enough to include some animals from the Wombledale, Red Ochre and Karandrea studs.

Ali is very particular about the features in the cattle in the herd. They must show true Galloway characteristics including a true to type double coat. Temperament is essential and any animal which does not have a good temperament is fixed from 'one ear to the other'. To ensure that they are never sold on and bred from Ali delivers them to the abattoir herself. This happens regardless of the quality of the animal. The best heifer from the K drop of calves met this fate. She was a magnificent type but her temperament was not good enough to stay in the herd.

Ali looks for correct structure and carcass type. The females must be fertile and have good mothering abilities and be able to rear a good calf from pasture alone without the supplementation of grain. A big udder is not looked on as a sign of milk. Some of Ali's smaller uddered cows produce the best calves as they just grow on and on. Ali believes it is linked to the quality of the milk produced, but it is also possible that their udder structure continues further into the body cavity of the cow and there is more milk tissue up there.



*Alison Hilli with Jalaway EJ*

In more recent times, Ali has been selling beef direct to the consumer. This is where the Galloway Family has the perfect characteristics for the commercial world. They are unique in the combination of meat quality, flavour, tenderness and fine marbling and produce an outstanding carcass on grass. And the older cows still produce an excellent carcass. One of the best animals Ali's family has ever eaten was an 8 year old cow who ended up with some fertility issues, so she was put into the cull paddock. The response from Ali's beef customers has been overwhelming in praise for the quality of the meat.

Running a paddock to plate business is not without significant challenges and is very time consuming. It was

years and many, many hours of work and analysis of cuts, meat and carcasses to produce a consistent product for the customer. But the feedback was phenomenal! When Ali first started selling at markets people would buy mince and a couple of steaks. At the next market those customers would visit her stall first and stock up on a wide range of cuts. In 2016 Ali underwent some personal challenges which resulted in her no longer being able to continue the larger scale direct beef sales. Her advice to anyone wishing to go down this path is to be prepared to work hard, and she means really hard! Listen and learn as much as you can. MSA becomes your best friend for some independent carcass results. Ali was particularly excited to be invited, as one of the top

100 MSA beef producers from Victoria, to attend the eating quality awards in 2015. Great recognition for the hard work put in over the years.

The future for Jalaway in 2019 and beyond is looking very bright with a high performing herd of cattle that have come through drought times in good condition. Ali still loves showing so will continue to show cattle at local and Royal Shows. The herd has a very broad genetic base with some quite rare genetics within the Belted Galloway breed. She hopes to continue to breed top quality, true to type Belties with the exceptional carcass and temperament that she has always selected for.

If you see Ali at a show stop and say hello!



*Contented cows and calves at Jalaway Stud, Willow Grove, Victoria*

# The Association: Past and Present

*The Association in its present form has been operating since 1998, but its origins stretch further back.*

Many people know of the history of Galloways in Australia, but perhaps not the history of the Association.

On the 8th March 1951, the importers of the first Galloway cattle into Australia formed the Galloway Cattle Society of Australia (GCSA). The first president was Mr H E Kater, of "Swatchfield", Oberon, New South Wales. Today, his daughter Mrs Joan Rofe, still retains an interest in Galloway cattle as a commercial member of the Association.

The first registered Belted Galloways were imported into Australia from New Zealand, by St Reginald Reed of Mt Wayo Stud, New South Wales, in 1973. Belted Galloways were included in the herd book in 1976, as there were further imports from New Zealand to establish several herds.

In 1978 it was agreed to allow the grading up of Belted Galloways from the mating of Belted Galloway bulls to black or dun Galloway females, and these cattle were then also included in the herd book.

White Galloways were introduced into the herd book in 1990, with the importation of White Galloway semen from Canada. A new ancestral code was then introduced into the herdbook to identify cattle with White Galloway genes in their pedigree.

Rules were introduced in 1997 to allow the registration of miniature Galloways - strict

height regulations are what separates miniature Galloways from Galloways and their registration certificates note them as miniature.

There has also been provision made for the Riggitt colour pattern Galloways to be included in the herd book.

In July 1998 the Australian Galloway Association Inc (AGA) was incorporated to assume the operations of the GCSA, with more flexible new Rules and By-Laws to suit modern practices and business.

The Association has a committee of nine members each serving a three year term, with three retiring year on a rotational basis. The committee is entrusted with running and administering the Association and is responsible for making the rules and regulations for the registration of Galloway cattle in the herd book.

An executive officer is employed to attend to the day to day operations of the Association, processing registrations, transfers, new memberships and other administrative matters as well as being responsible for newsletters and the Annual.

The AGA now has a simple fee structure, with an annual membership payable. To register cattle, a once off registration fee is charged, with no ongoing annual fees or inventories charged. When a registered animal is sold, the registration of the animal can be transferred to the new owner.

An Annual General Meeting is held during the first few

months of each year, and a field day is usually combined with the AGM. Topics covered are diverse, and generally cover what is of interest to members at the time. The venue is different every year, and generally held in an area where reasonable numbers of members reside to encourage a good attendance. The AGM for 2020 will be held in the Tamar Valley region of Northern Tasmania.

Members are encouraged to attend field days and/or hold their own. The Association has promotional material which can be provided to use at field days. If attending an organised field day by a third party, the Association's public liability insurance is available to cover risks - a call to the office to obtain the certificate of currency is all it takes to be covered. Shed cards for shows are available from the office. The pedigree details of your cattle can be written on the cards.

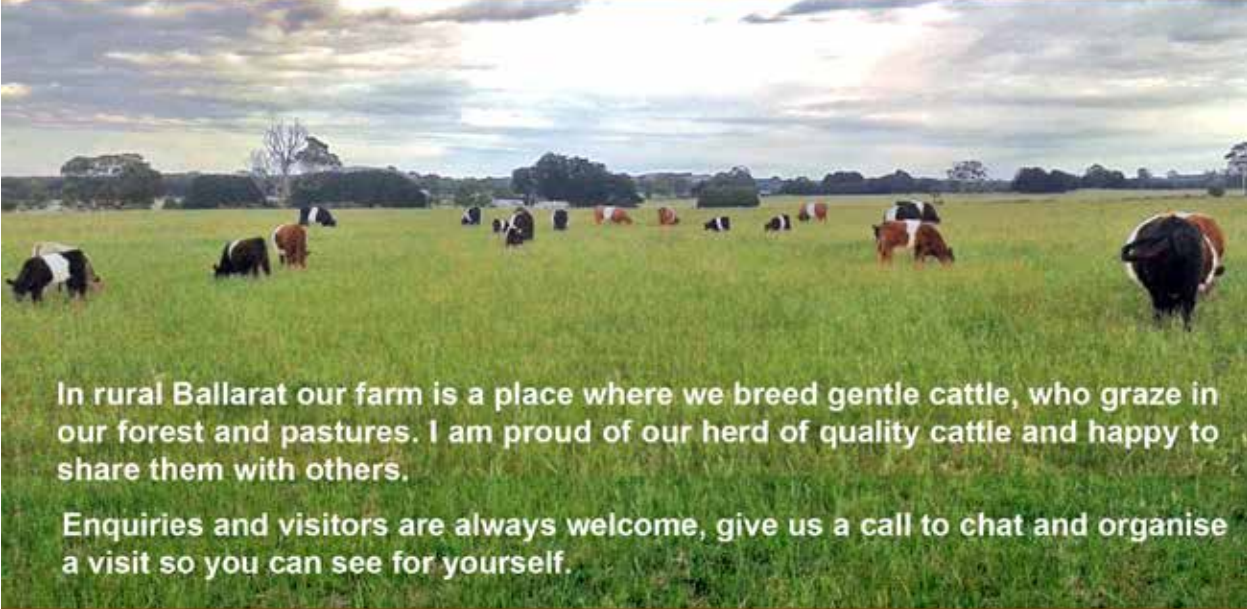
## *Show Uniform*

The approved show uniform for the Australian Galloway Association is denim jeans, a blue chambray shirt, and a black woolen vest with the Association's logo, combined with a galloway tartan tie or scarf. The vest, scarf and tie are available from the Association's office, and are also great for wearing at Field Days where you have stock on display. The clothing immediately identifies you as being connected with the display and any cattle on display there.

A range of vests of varying sizes are generally in stock - if you need a different size it takes about three weeks to have it manufactured. Caps with the AGA logo are now also available, and prices for each item can be found on the Association's website.

Call or email the office to order yours!

# Clan Woolfe Belties



In rural Ballarat our farm is a place where we breed gentle cattle, who graze in our forest and pastures. I am proud of our herd of quality cattle and happy to share them with others.

Enquiries and visitors are always welcome, give us a call to chat and organise a visit so you can see for yourself.

**Cameron Woolfe**

PO Box 2398

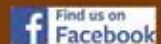
Bakery Hill Victoria 3354

[www.clanwoolfebelties.com](http://www.clanwoolfebelties.com)

Phone: 03 5334 0588

Mobile: 0409 190 776

Email: [clanwoolfebelties@gmail.com](mailto:clanwoolfebelties@gmail.com)



## FOR SOMETHING A LITTLE DIFFERENT

**Raymond Cross  
and  
Baden Geeves**

YARRAMAN S.E. QLD

07 4163 8652

E: [freedomrise@bigpond.com](mailto:freedomrise@bigpond.com)



## RED & BLACK MINIATURE BELTED GALLOWAYS



# Bull soundness and structure

*A bull's fertility is the most important of his traits. You want him to be able to sire many calves, and sire them early each joining season. To do this, a bull must be sound in his structure so that he lasts many years, serving many cows in a short period of time without suffering injury.*

Structural soundness is hence an integral part of this fertility. The bull's ability to remain fertile is dependent on his structural soundness.

Elements of a bull's conformation are heritable. If a bull shows straight legs and badly grown claws, for example, any sons or daughters kept in the herd may also have these problems. When structural soundness in a bull is mentioned, most producers think in terms of leg and shoulder structure and the wear and tear on feet and joints. This is very important, but structural soundness includes all visual aspects of the structure of the beast.

To understand all aspects of the bull's structure and be able to compare one animal to the next, it is wise to adhere to a routine examination. One pattern to use may be this:

- Start with head, neck, brisket, shoulders and front legs and feet.
- Next view along the underside to the sheath, then testicles and the back legs and feet.
- Follow your way up to the pin bones and hips, then the topline and back to the shoulders and neck. The bull should be viewed from the side, from the front, and from behind. He should be allowed to walk out, and again be viewed from the side, from the front and from behind to confirm any suspicions of poor leg structure. Let's look at each of these areas individually.

## *The Head*

The head should show reasonable length and width yet not be too large in proportion to the body. A head that is too big could potentially increase calving problems.

## *The Eyes*

Some breeds are very susceptible to eye cancer. Eye cancer is a serious condition leading to wastage in cattle and possible condemnation of the carcass. Susceptibility to it is a heritable trait, and while several factors contribute to its onset, exposure of the eye to sunlight plays a major

part. The eyes should be well set into the head to reduce this exposure. There should be a strong forehead over the eye, providing protection from sunlight (hooding). Eyes that bulge out from the head should be avoided. Pigment around the eye will also assist in reducing eyelid cancer in the white-faced breeds.

## *The Muzzle*

The muzzle should be wide for efficient grazing. The teeth on the lower jaw should meet squarely with the upper pad. Bulls with overshot jaws (lower jaw protruding) and undershot jaws may have difficulty grazing on pasture, especially when conditions get tough.

## *The Neck*

The neck should be of good length and held high. A bull which holds his head and neck low may in fact be straight in the shoulder. This affects the bull's gait and mobility. A straight-shouldered bull is also likely to be straight in the hind legs, a very serious fault, leading to early breakdown.

## *The Brisket*

The brisket is one area in which fat will be deposited. The bull should be trim in the brisket, as he should be throughout his body. Overfat bulls may in fact be light in their muscle, producing progeny with lower yielding carcasses. Bulls that appear fat at sale may have been overfed in their preparation. Overfeeding, especially on high grain rations, may affect the fitness and longevity of the bull, as he carries more weight than his structure is designed for. Overfat bulls may also show temporary reduced fertility, if fat is laid down in the neck of the scrotum.

## *The Shoulders*

The shoulders and front leg structure of the bull are shown in Figure 1, left. The shoulders are naturally sloping. A slope of 45–60 degrees is considered acceptable. A beast whose shoulder blade is tipped forward (straight-shouldered) has less

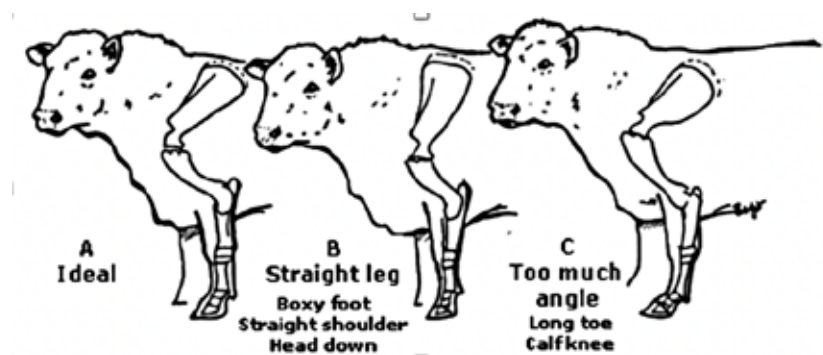


Figure 1. Front leg and shoulder structure of the bull

angle at the shoulder joint and elbow joint and this reduces the shock-absorbing ability of these front joints.

The straight-shouldered bull tends to walk with a short choppy gait. He will carry his head low and may have difficulty raising his head much above his backline. Quite often the tip of the shoulder blade is prominent above his backline. Usually, a bull that is straight in the shoulder will also be straight in the hind leg. These bulls are particularly prone to early breakdown through the wearing of the leg joints, and the onset of arthritis. While many straight-shouldered bulls will break down in the hind leg, they are also more susceptible to arthritis in the pasterns and knees of the front leg. Straight-shouldered bulls may also be straight in the pasterns, causing rapid wearing of the front of the hooves.

The shoulder should be smooth against the rib cage. Bulls whose shoulders are wide at the point of the shoulder (the base of the neck) or wide between the shoulder blades (when observed from above) may throw heavily shouldered calves, increasing the chance of calving problems (see Figure 2), below.

Bulls with straight shoulders may also affect the ease of calving. Any deviation away from the normal angles of the calf may produce an abnormal calf shape, causing

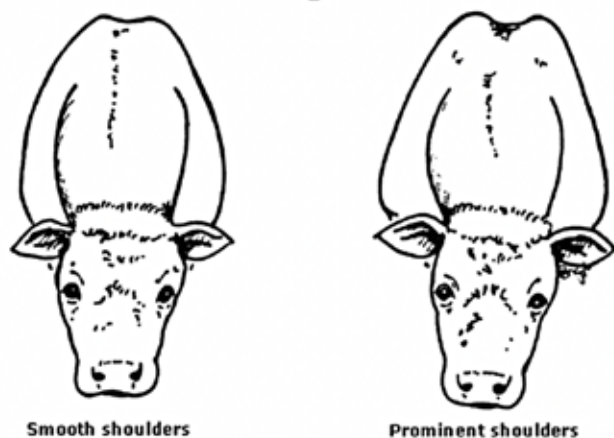


Figure 2. Bull shoulders should be smooth against the rib cage.

calving difficulty. It should be remembered that many things affect calving difficulty, and that calf size (weight) in relation to dam pelvic size will have the greatest effect on ease of calving.

*Front legs and feet*

The front legs of the bull should be straight when viewed from in front. On a structurally sound animal, a vertical line may be drawn from the point of the shoulder to the middle of the claw. This line should intersect the knee. See Figure 3, below.

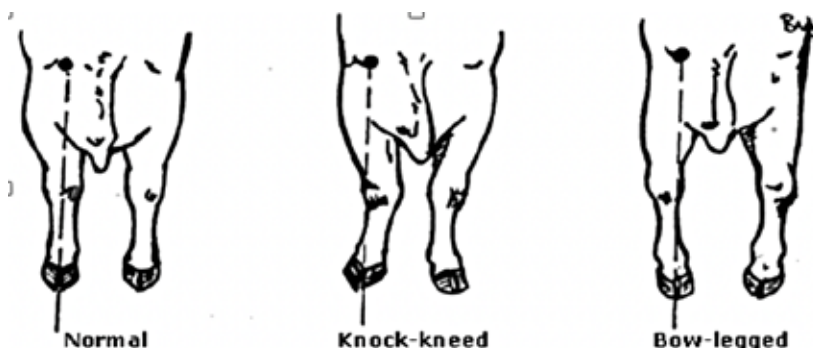


Figure 3. Front legs of a bull should be straight when viewed from the front

As the knee joints carry more than half the bull's body weight, deviations from this line may cause excessive wearing of these joints.

A 'knock-kneed' bull may have turned-out front feet (up to 10 degrees is considered normal). A bull is considered 'knock-kneed' when the knee joints lie inside this line, which may eventually lead to overgrown outside claws.

A bull that is wide at the knees (bow-legged) presents a more serious problem. These animals are often narrow in their stance and may roll their feet as they walk. They can also be wide in their shoulders.

From the side, the forearm and cannon bones should be in a straight line. A knee joint forward of this line (buck-kneed) can be associated with steep shoulders and pasterns, and may be a serious fault. A knee joint set back of this line (calf-kneed) may be associated with sloping shoulders and has

little impact on function.

The way the claws of the feet grow often indicates structural problems higher up the legs. Long or excessively short even claws may indicate too much or not enough pastern angle, causing both claws of the hoof to grow or wear excessively. Overgrown claws affect the mobility and performance of the animal.

Figure 4 (next page) indicates the correct angle of the pastern joint.

Uneven wearing of the two claws, where one grows longer than the other, is often due to a problem in the leg structure. It is caused by an uneven distribution of weight through the foot.

If the claws curl across each other without growing long, a serious genetic fault ('scissorclaw') may be apparent. These cattle wear the back of the hoof, causing lameness and

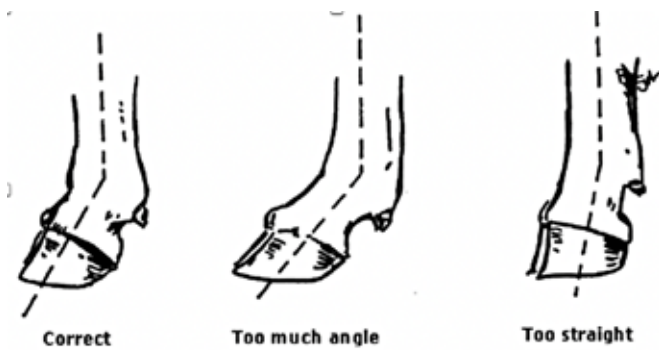


Figure 4. Correct angle of the pastern joint

reducing mobility.

Where excessive claw growth is caused by things other than structure (soft soil, heavy grain feeding, lack of exercise), extra pressure is placed on the leg joints, eventually causing lameness.

**Feet**

Avoid overgrown, scissor or curved claws. See Figure 5, below.

Mild curling is normal. It is exaggerated by heavy feeding and soft soils. Overgrown, uneven claws are usually indications of poor limb structure or early signs of hip arthritis. Avoid extremely short

feet, which are often associated with overstraight legs.

**Walk**

Look for a free-moving gait, with the hind feet stepping into the footprints of the front feet (see Figure 6 above). Overstepping or understepping are indications of structural problems, as are uneven footprints from the claws.

**Hind legs and feet**

The structure of the hind legs is similar to that of the front legs. Again there are well-defined angles in the joints at the hip, stifle, hock and pastern joints. The angles are critical, particularly during serving

when large amounts of stress are placed on these joints. Deviations from the correct angles (see Figure 6 next page) will cause excessive wear and tear on the joints, leading to early breakdown. More bulls seem to break down from problems associated with the hind leg than from any other reason.

Too much angle in the leg joints (straight-legged) is a serious structural fault. These cattle don't have the flexing and shock-absorbing effect of the structurally sound animal, and they are prone to severe wearing of the hip joint, leading to arthritis. Bulls showing arthritic problems are reluctant to serve many cows, as the condition can be quite painful. When a bull mounts a cow, he straightens up the joints in his hind leg. When he thrusts, he further straightens the leg, placing enormous stress on all joints, but particularly the hock. If these joints don't have enough angulation, they become swollen and painful, leading eventually to their breakdown.

Straightness in the hind leg can be seen in the hock and pastern joints, and this indicates straightness in the stifle and hip. These cattle will wear the front of the claws, resulting in short upright hooves. Straight-legged bulls are also much less athletic than the sound bull and appear to suffer a higher incidence of broken or damaged penises during serving.

A structurally correct bull, when walking, will place his hind foot in exactly the mark left by his front foot. If he is lame, or not moving freely, or if he is straight in his leg structure, he will short-step and not reach his mark. Likewise, if he is suffering arthritis in one leg he may tend to short-step or drag his leg on that side. Problems such as these will affect the serving ability of the bull.

If the degree of the angle in the leg joints is less than ideal, 'sickle hocked' condition

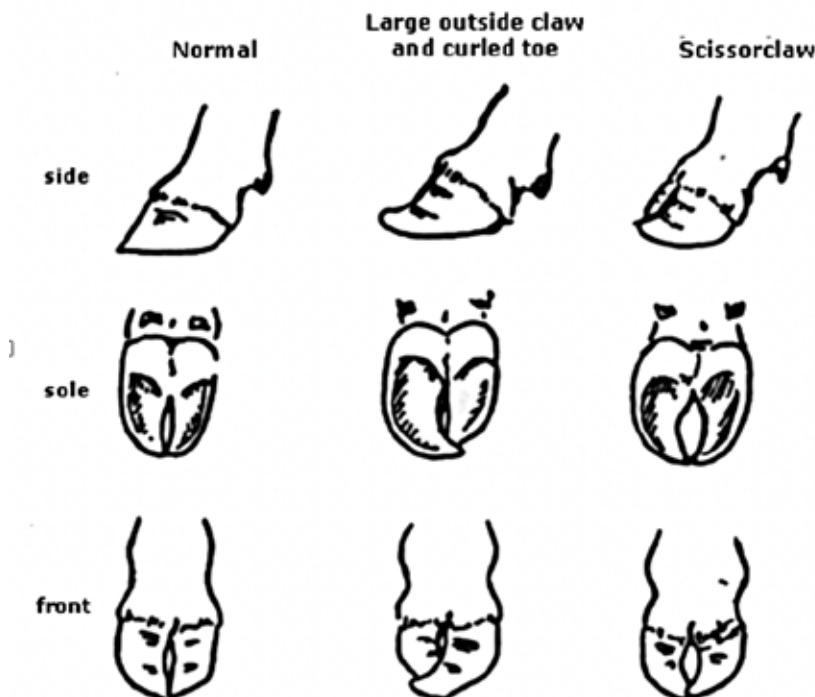


Figure 5. Avoid overgrown, scissor or curved claws.

may exist. This is less of a problem than straight legs, but in extreme cases may cause strained ligaments (pastern and hocks) and long claw growth, increasing the chance of injury, and affecting serving ability. Sickie-hocked bulls may overstep the mark of the front feet as they walk out. Sickie-hocked bulls appear to have less balance than do sound bulls. They may lose their balance during serving, therefore running a higher risk of injury.

Viewed from behind, the tibia and metatarsus (hock joint) should be in a straight line. A bull is 'cow hocked' when the hocks are rotated inwards and the hooves rotated outwards. This may cause problems but usually only in extreme cases where uneven pressure on the claws may cause the outside claw to grow long.

A more serious problem occurs where the legs are wide at the hocks ('bow-legged'), but the feet are turned in. Extra strain is placed on the ligaments of the

hock joints causing lameness and even permanent damage.

*Leg angulation*

Avoid:

- Post legs (straight hocks) (see Figure 7a) These cattle generally walk short and have worn 'boxy' toes. They are prone to arthritis in the hips and other joints, and damage to the ligaments. Penis damage can occur due to serving accidents, as these bulls have poorer balance than do structurally correct bulls. Libido will naturally decline.

- Sickie hocks (the opposite to straight hocks) (see Figure 7b)

The joints are over-angled, leading to overstepping and long overgrown claws and lameness. Moderate cases are not a concern, but bad sickie hock strains ligaments, damages the dew claw and affects serving ability.

*Notes*

- Many of the above symptoms are at least partly genetic. They can be exaggerated by factors such as overfeeding, mineral



Figure 7a. Post legs



Figure 7b. Sickie hocks

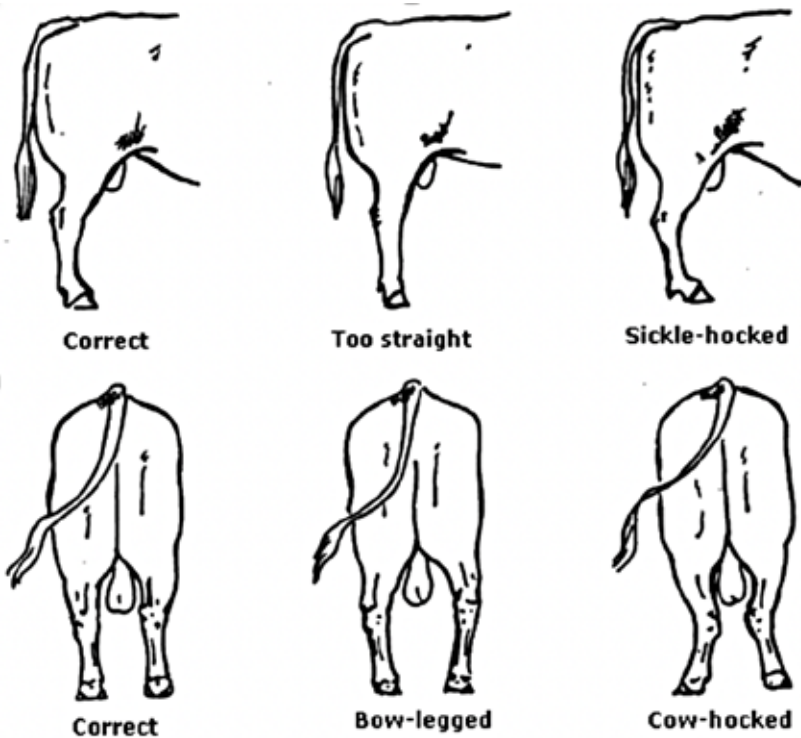


Figure 6. The structure of the hind legs should be well-defined angles in the joints at the hip, stifle, hock and pastern joints.

deficiencies and soft soil. Hoof trimming can temporarily hide some problems.

- Grass-reared or lightly fed bulls have fewer structural problems and longer working lives, as do well-managed yearling bulls. Their body weight as they develop is more in keeping with the weight-bearing ability of their joints.

*The sheath*

The sheath should be trim and close to the body (see Figure 8, next page). A long sheath or an excessively angled sheath is more prone to injury or infection (from grass seeds or other foreign objects) and should be avoided. Some breeds are more susceptible to these problems and buyers of these cattle must



**Desirable sheath**



**Loose, undesirable sheath**

*Figure 8. The sheath should be close up against the body to prevent injury.*

be critical in their selection. A slack prepuce (the fold of skin covering the penis) should also be avoided. A bull who lets his prepuce hang out for long periods of time should be regarded as having a serious structural fault.

*Top line*

The width of the bull's top line will help indicate the animal's muscling. Heavily muscled bulls will be wide and bulging in their top line, especially behind the shoulder, and in the loin.

*Conclusion*

Observing each of these features, in the routine suggested, will ensure that no

structural aspects of the bull have been missed. Quite often you'll notice an obvious fault such as straight legs or uneven hoof growth immediately. You can note this and move on to the next bull. A routine such as this will enable large numbers of bulls to be checked quickly.

The visual examination should be combined with an assessment of any performance (BREEDPLAN) or fertility information on the bull, to give a balanced appraisal of that animal.

© State of New South Wales through NSW Department of Industry

# Did you know?

- Cattle don't have teeth on their upper jaw; their upper palate is very hard and they press their teeth against the upper palate to break their food into smaller pieces
- Cattle jaws will move around 40,000 times in a single day
- The rate of the heart beat in cattle is 60 - 90 beats per minute
- The normal body temperature of cattle is: adult cattle 37.8 - 39.2 calves 38.5 - 39.8
- The term "cowlick" originates from the habit of cows licking their calves, resulting in a swirling pattern in the hair. The most common site of a human cowlick is in the crown, but they can show up anywhere
- The average number of hair follicles in a 450 kg cow is 34 000 000!


# Glenblairie

## BELTED GALLOWAYS

---

### Standard

Bulls \* Heifers \* Cows \* Calves



## & Miniatures

Foundation herd of Miniature Belted Galloways. Established by breeding down in size over a 15 year period, by line breeding for size. These are Fullblood Miniatures. Glenblairie Olympus measured 117cm at 3 years.

Arie & Erica Eyles Ph/Fax: 03 5345 6468

e: arie@activ8.net.au w: www.glenblairiebeltedgalloway

# Out and About

## Freedom Rise Stud Field Day

Raymond Cross and Baden Geeves have held a field day at their Freedom Rise property at Yarraman, Qld for the past several years, covering topics such as tattooing, tick treatment, drenching, height measuring and breaking in techniques. The field days have proven popular both with members and others who are interested in learning more about cattle, diseases and practices.

Simon Bednarek, from Burringbar Stud in New South Wales, attended the most recent field day in September 2019, and reported the following:

"Raymond and Baden from the first confirmation email to the breakfast the following day after the workshop went out

of their way to be informative, friendly and helpful. There was a wide range of people who attended and their diverse questions were helpful, not only to me but the other people there as well.

The highlight for me was halter training. The technique demonstrated appears very achievable for someone who has not done it before and who was wondering how and where to start. Little helpful hints from how to gently handle the calves to cutting ropes with a hot knife have given me confidence to try it myself.

I was able to make my own set of ropes the next day for my training back home. I have two calves from last year which, although very tame, I would like to be halter trained. Watching Raymond being so patient with his cattle reinforced to me that this is the way to handle them. At the



*Raymond Cross, centre, preparing to demonstrate injection techniques.*

moment most of my herd of 15 I can pat in the paddock while they are eating hay.

Looking at the yards and the setup of them was also helpful. Staying overnight and going out for dinner with another stud owner and then having breakfast together before more halter training (the training was really for me as the calves seemed very tame and trained!) enabled me to ask many more detailed questions about breeding, feeding through the drought, problems they have had and just general tips. I have only had Galloway cattle for three years and before then had no experience with farming at all so I can recommend Raymond and Baden as a very good resource and their field day as an excellent event to go to."

Watch out for a 2020 date - these field days are usually held in September.



*Simon working on halter training techniques at the field day.*

**NRG Hair Shimmer**



*Australian made for a super coat finish!*

*A non oily, water based natural hair shine developed by cattle owners for show and sale preparation.*

For further information, head to our website [www.nrgteam.com.au](http://www.nrgteam.com.au) or call us 0359642999



## Warialda Belted Galloway Beef does it again!

The *delicious.* Harvey Norman Produce Awards celebrate outstanding Australian ingredients grown, caught, sourced or produced with dedication, passion, knowledge and regard for the environment. Now in it's 15th year these most prestigious Australian food awards also recognise the people who care for and provide the produce that lands on the plates of diners.

Allen and Lizette Snaith from Warialda Belted Galloway Beef have been breeding Belted Galloways for over 35 years, and are based in Clonbinane, Victoria. They have consistently been recognised by the *delicious.* awards and it is pleasing to see that in 2019 they were again in the winners circle, being awarded State Victorian winner in the "From The Paddock" category. Since 2010, the Snaiths have received recognition every year except one, for their quality Belted Galloway Beef. Allen and Lizette have worked extremely

hard to consistently produce their 100% grass fed dry-aged beef which is sought after by restaurants and snapped up quickly at farmers markets. The Snaiths are dedicated to using all cuts of a beast from nose to tail, and are now also marketing the hides of their cattle as well as producing bags and clutches from the hides. Added to this the Snaiths host some on-farm feasts from time to time, including a magnificent lunch for World Galloway Congress participants.

Congratulations and keep up the great work Allen and Lizette. To catch up with the Snaiths at a farmers market near you check their website [www.wbgbeef.com.au](http://www.wbgbeef.com.au).



## Murrumbateman Field Day

With around 460 exhibitors and 16,000 visitors, the Murrumbateman Field Days have proven to be very popular once again.

On the weekend of the 19th and 20th October 2019, DMB and Bangalla Miniature Belted Galloways represented the Association at the Murrumbateman Field Days. Rewarded by excellent sunny weather and a very large attendance, the site was kept humming with interested people and existing Galloway owners.

This year the site was wholly stocked with miniature Belted Galloways, with the whole range of colours on display,

including black, dun, silver dun and brick red calves, bulls and heifers. The red calf, making his first public appearance at just 3 weeks of age, was undoubtedly the star of the weekend. He spent most of his time sleeping, but also appeared to enjoy the pats and scratches of the admiring visitors to the site.

Given the drought, sales activity and interest was low for the immediate future, but once the feed situation improves it is expected interested people will make contact.

Mark Burgess from DMB and Leanne and Gareth from Bangalla had a great time at the field days promoting their cattle and catching up with old customers. They look forward to doing it again next year.

## World Galloway Congress

As the Annual went to print last year we were looking forward to the World Galloway Congress that was hosted in Melbourne by the Australian Belted Galloway Association. It brought many overseas Galloway family breeders to Australia, and several members opened their properties to the tours organised after the Congress. Warialda Belted Galloway Beef hosted a fabulous lunch, and gave a great presentation on their paddock to plate operation. Another day trip and Glenburn Station opened their gates to welcome visitors to view their Galloway cattle on display. Later, following a short drive to the Balytyckle Miniature Galloway Stud, visitors were then welcomed by a piper and treated to a delicious afternoon tea, and a viewing of the stud's miniature Galloway cattle.

During November 2020, the American Belted Galloway Society will be hosting the World Galloway Congress. To be held in Louisville Kentucky, from 14th to 20th November, the Congress and activities following the formal sessions offer something for everyone. See the website at [www.worldgallowaycongressusa2020.com](http://www.worldgallowaycongressusa2020.com) for further information.



# Royal Canberra Show - Galloway Family Feature

*An invitation from the Beef Cattle Committee of the Royal Canberra Show for the Galloway Family to be the feature breed at the 2019 show was just too good an opportunity to pass by...*

The Committee of the Australian Galloway Association did not have to think too hard about accepting the opportunity of having Galloway cattle as the feature breed at the 2019 Royal Canberra Show, seeing it as an ideal opportunity to build on the publicity generated by the World Galloway Conference held in Melbourne during September and October 2018. The Show's Beef Cattle Committee was very helpful and co-operative, and before we knew it the schedule had been organised and sponsorship requests were underway.

Aware of the tough conditions being faced in many parts of Australia, the Committee was unsure of how many exhibitors would be able to be present at the show, and how good a show we would be able to have. None the less

the Committee kept planning, with Sonya Heron shining in the sponsorship department, managing to secure some cash donations and goods that could be used as prizes, a large basket of goodies for a raffle prize and also items for an auction at the Saturday evening social function. Sonya's efforts ensured exhibitors had some great prizes!

In the weeks leading up to the show it was great to see entries coming in, and final preparations being made for the show. Exhibitors came from as far away as Queensland and Victoria as well as the usual more local entrants from around the area and further afield in New South Wales. On judging day it was also great to see spectators from these areas, as well as some who had ventured across Bass Strait from Tasmania.

Friday the 22nd February saw exhibitors and their helpers busy washing cattle and carrying out last minute clipping to ensure the cattle would be presented to the judges looking

their very best.

The Association's Annual General Meeting was held early in the evening at the Tradies Club, and attracted a good number of members. Following the meeting many stayed for a delicious meal at the bistro there and caught up with friends, while others headed back to the cattle sheds to make sure everything was in order for the following day.

The exhibitors goodies bags, containing items from our sponsors, were put together by several helpers on Friday night - many hands made light work of it and many laughs were had as well.

Show day saw exhibitors up early to make their final preparations. First out in the ring under the eyes of judge Peter Collins, and associate judge Hamish McClure were the Galloways. There were seven Galloways exhibited by Jason and Suzanne Vials, Monreith Stud, five exhibited by Greg Stuart and Christine Hart, Minto Stud, and Orange High School's Elm Park Stud exhibited three head.

Stud Stock Sales were engaged to "livestream" the judging. This meant that all the classes were filmed, with the filming being uploaded to the Association's facebook page. Galloway enthusiasts worldwide were able to watch the judging as it took place. From feedback received



*Trophies and ribbons on display*



*Sam Reynolds, Essar Livestock & Matthew Maiolo, Red Ochre Stud*



this was successful with many people who were unable to be ringside being able to see the judging as it took place.

Following on from the Galloways were the Belted Galloways, with 18 entries in total from Sam Reynolds, Essar Stud, Pam Brown and John Maiolo, Red Ochre Stud, Peter Munday and Alexandra Teuma, Seven Hills Stud, junior member Chelsea Filmer, Pageoway Stud, Debbi Jeffery, Croftdale Stables, Jonathan Chia, Nurrenyen Stud, and Greg Stuart, Benvuie Stud. The miniature Galloways were next with a record 31 entries from Alan and Pauline Dunk, Tumblegum Stud, Glynda Bluhm, Galloway Magic Stud, Shane Smeathers and Will Brigham, Romani Stud, Pat Hunder, Torcroft Stud, Marty Keays and Sony Heron, Balytyckle Stud, Malcolm Sky, Kybella Pastures Stud, Ian Bull, Gleneagles Stud and new members Nicole McKenzie and Tony Starr, Puddleby Stud.

The miniature Belted Galloways finished the breed classes with ten entries from Gareth Ellem, Bangalla Stud, junior members Troy and Kate Hepburn, Foxtail Hill Stud, Baden Geeves and Raymond Cross, Freedom Rise Stud and Shane Smeathers and Will Brigham, Romani Stud.

Following the breed classes, the Supreme Exhibit from each of the Galloway family groups was piped into the ring by piper John Wombey for the judging of

the Galloway Family Supreme Exhibit, which was awarded to Seven Hills Nutmeg, owned and exhibited by Peter Munday and Alexandra Teuma. Kindly sponsored by Alan and Pauline Dunk, Tumblegum Stud, and Darryl Holder from the Cattle Shop, a beautiful engraved plate and banner were awarded to Peter and Alexandra and 7 Hills Nutmeg.

The judges had a long day, and carried out their duties very well, making comments about the animals they had placed in each class and why they had placed them as they did. Judge Peter Collins is very experienced, having judged at numerous royal, country and breed specific national shows and sales. Peter is the principal of the Merridale Angus Stud, with Merridale cattle being very successful at Sydney, Melbourne and Adelaide Royal shows, winning interbreed championships at all of them. Encouraging young people is an interest of Peter's, so he was happy to have associate judge, Hamish McClure, in the ring with him. Hamish is studying in year 12, is from a cattle and sheep property, prepares show steers, and earned this judging position by winning a Young Junior Judging competition. Hamish said when he leaves school he would like to work in the livestock industry.

After judging, came the the grand parade, where the Galloway Family led the parade



*Pauline Dunk with the the beautiful plate sponsored by Pauline and her husband Alan from Tumblegum Stud, which was awarded to the Supreme Galloway Family Exhibit - 7 Hills Nutmeg.*

of all the beef cattle exhibited. After settling the cattle back into their stalls following a long day, exhibitors, AGA members, friends and family gathered for a social evening, catching up with old friends and meeting new people. After some delicious food, Peter Collins made some comments about the cattle he had seen in the judging ring. Association President Shane Smeathers made a presentation to Luke Bonar, who retired from the committee at the AGM after serving three terms of three years. The raffle which Sonya Heron had organised was drawn,



*Wayne & Alicia Hepburn  
Foxtail Hill*



*Debbi Jeffery  
Croftdale Stables*



*Malcolm Sky  
Kybella Pastures*



*Piper John Wombey*

with the basket of goodies heading to Queensland with the winner Baden Geeves. Several auction items were on offer and eagerly sought with some spirited bidding taking place!

There were many people who helped to make the Feature Show a happy and successful show, and thanks go to them all for their help and support. Roger Rankin did a great job with the ringside commentary and Luke and Emily Bonar worked all day as the ribbon stewards. Lisa Eastaway worked tirelessly as the steward making sure the right cattle entered the ring at the right time, and Tony Starr was a great ring steward keeping everyone moving. There were several people manning the Galloway Family information stand: Carol Simpson, Sonya Heron, Marty Keays, Garth Matthews and Ian Bull. Our thanks to them and anyone else who helped out in any way.

The Feature Show would not have been what it was without support from sponsors; both members and other interested people and some from the corporate world. The Association gratefully acknowledges the contributions from them all.

Please support our sponsors where possible.

*Member Sponsors*

Carol Simpson - Murrinoak Stud  
 Marty Keays & Sonya Heron - Balytyckle Stud  
 Baden Geeves & Raymond Cross - Freedom Rise Stud  
 Hepburn Family - Foxtail Hill Stud  
 Shane Smeathers & William Brigham - Romani Stud  
 Pam Brown & John Maiolo - Red Ochre Stud  
 Alan & Pauline Dunk - Tumblegum Stud  
 Gareth Ellem - Bangalla Stud  
 Robbie & Jan Davidson - Karandrea Stud

Roger & Fran Rankin

*Corporate Sponsors*

AG Coombs Group  
 Pregrite Genetics  
 The Cattle Shop  
 Australian Belted Galloway Assoc  
 Oversem  
 NRG  
 Larkfield Estate  
 Agspand Feedchar  
 WFI  
 Get Fleeced  
 Killara Estate Vineyard  
 RB Sellars



*Pauline Dunk, Daryl Holder, Peter Munday, Alexandria Teuma, 7 Hills Nutmeg and handler Scott Costello, judge Peter Collins,*



*Sallie Wadley, Kerrin Nieland, Kermond Park Nina and handler Sam Croker, judge Petter Collins and associate judge Hamish McClure*



*Raymond Cross, Fran Rankin, Roger Rankin*



*Marion & Bryan Watts*

## Results

### Belted Galloways

Calf Champion Female - C Filmer - Pageoway Patronus  
Reserve Calf Champion Female - C Filmer - Bonnibelt Paprika  
Junior Champion Female - P Munday & A Teuma - 7 Hills Nora  
Reserve Junior Champion Female - C Filmer - Pageoway Lahdidah Nemo  
Senior Champion Female - P Munday & A Teuma - 7 Hills Nutmeg  
Reserve Senior Champion Female - P Munday & A Teuma - 7 Hills Money Penny  
Grand Champion Female - 7 Hills Nutmeg  
Calf Champion Bull - P Munday & A Teuma - 7 Hills Patrick  
Reserve Calf Champion Bull - P Munday & A Teuma - Jalaway Outlander Affair  
Junior Champion Bull - J Chia & G Crease - Nurrenyen Newton  
Reserve Junior Champion Bull - D Jeffery - Croftdale Stables Pied Piper  
Senior Champion Bull - P Brown & J Maiolo - Red Ochre Nitro  
Grand Champion Bull - Nurrenyen Newton  
Supreme Belted Galloway Exhibit - 7 Hills Nutmeg

*7 Hills Nutmeg*

### Miniature Galloways

Calf Champion Female - A & P Dunk - Tumblegum Brae  
Reserve Calf Champion Female - A & P Dunk - Tumblegum Rosslyn  
Junior Champion Female - A & P Dunk - Tumblegum Isla  
Reserve Junior Champion Female - M Sky - Kybella Pastures Rusty Chocolate  
Senior Champion Female - P Hunder - Torcroft Sylvia  
Reserve Senior Champion Female - A & P Dunk - Tumblegum Lorna  
Grand Champion Female - Tumblegum Isla  
Calf Champion Bull - S Smeathers & W Brigham - Romani Principal Pride  
Reserve Calf Champion Bull - A & P Dunk - Tumblegum Gordon of Honeygot  
Junior Champion Bull - M Keays & S Heron - Balytyckle Periwinkle  
Reserve Junior Champion Bull - G Bluhm- Galloway Magic Pablo  
Senior Champion Bull - A & P Dunk - Torcroft Thyme  
Reserve Senior Champion Bull - I Bull - Gleneagles Mondeo  
Grand Champion Bull - Torcroft Thyme  
Supreme Miniature Galloway Exhibit - Torcroft Thyme

*Nurrenyen Newton*



*Tumblegum Isla*

### Miniature Belted Galloways

Calf Champion Female - R Cross & B Geeves- Freedom Rise Poppy  
Junior Champion Female - S Smeathers & W Brigham - Kermond Park Nina  
Reserve Junior Champion Female - R Cross & B Geeves - Freedom Rise Petra  
Senior Champion Female - G Ellem - Bangalla Muffit  
Reserve Senior Champion Female - Foxtail Hill Stud - Foxtail Hill Mia  
Grand Champion Female - Kermond Park Nina  
Calf Champion Bull - Foxtail Hill Stud - Foxtail Hill Check Me Out!  
Junior Champion Bull - Foxtail Hill Stud - Foxtail Hill Ned Kelly  
Reserve Junior Champion Bull - R Cross & B Geeves - Freedom Rise Pablo  
Grand Champion Bull - Foxtail Hill Ned Kelly  
Supreme Miniature Galloway Exhibit - Kermond Park Nina

Supreme Miniature Galloway & Miniature Belted Galloway Exhibit - Kermond Park Nina



*Torcroft Thyme*

### Galloways

Calf Champion Female - J & S Vials - Monreith Pocahontas  
Reserve Calf Champion Female - G Stuart - Minto Lady Gretel  
Junior Champion Female - C Hart - Minto Irene 10th  
Reserve Junior Champion Female - J & S Vials - Monreith Nutella  
Senior Champion Female - J & S Vials- Monreith Hiver  
Reserve Senior Champion Female - J & S Vials - Monreith Moonstone  
Grand Champion Female - Monreith Hiver  
Junior Champion Bull - J & S Vials - Monreith Napoleon  
Senior Champion Bull - Elm Park/Orange High School - Elm Park Montgomery  
Grand Champion Bull - Elm Park Montgomery  
Supreme Galloway Exhibit - Monreith Hiver



*Kermond Park Nina*



*Foxtail Hill Ned Kelly*



*Torcroft Sylvia*

# Members List

\* Life Members

## NEW SOUTH WALES

### Amberley Park - AP

#### Hannah Cock

"Strathvean", 1 Mate Street  
TARCUITA NSW 2562  
M: 0459 766 428  
E: hannahraecock@gmail.com  
www.amberleyparkbeef.com.au

### Black Galloways

### Bagot - BGT

#### Christopher & Leanne Jackson

920 Glenn Road  
MURRAMI NSW 2705  
M: 0427 537 594 Chris  
M: 0427 667 836 Leanne  
E: leannehwh@hotmail.com

### Miniature Galloways

### Bangalla - GDE

#### Gareth Ellem

568 Greenwood Road  
MURRUMBATEMAN NSW 2582  
P: 02 6227 1568  
M: 0416 339 023  
E: gareth.ellem@platinumcontracting.com.au

### Miniature Belted Galloways

### Barakool - GFC

#### Steve Chalmers & Michelle Canny

RMB 215  
BARAKOOL VIA BARHAM NSW 2732  
M: 0428 531 825  
E: barakoolfarm@gmail.com

### Miniature Galloways

### Belvue Ranch - BBR

#### Ben & Bridget Flocco

71 Mockingbird Road  
PHEASANTS NEST NSW 2574  
M: 0423 666 537  
E: bnbflocco@gmail.com

### Belted Galloways

### Billyzon - MOO

#### Kathy Hansch

6463 Kings Highway  
CARWOOLA NSW 2620  
P: 02 6297 5860  
E: khansch@iimetro.com.au

### Miniature Galloways

### Bondi Farm - HAT

#### Helen & Cliff Turner

PO Box 167  
BOMBALA NSW 2632  
P: 02 6458 7323  
E: gypsykent@clearmail.com.au

### Miniature Galloways

### Bungendore - BMG

#### Glenn Chapman

PO Box 383  
BUNGENDORE NSW 2621  
P: 02 6238 0714  
M: 0418 223 297  
E: b-m-g@glenchchapman.com.au

### Miniature Galloways

### Burringbar - BUR

#### Simon Bednarek

70 Burringbar Road  
BURRENBAR NSW 2483  
M: 0407 490 915  
E: simon.bednarek@gmail.com

### Miniature Galloways

### Cobbersbelle - COB

#### Belinda Stauner

209 Deaves Road  
MANDALONG NSW 2264  
M: 0414 551 978  
E: cobbersbelle@gmail.com

### Miniature Galloways

### Croftdale Stables - CDS

#### Debby Jeffery

1368 Dyraaba Road  
DYRAABA NSW 2470  
M: 0402 413 480  
E: croftdalestables@gmail.com

### Belted Galloways

### Davislea - LEA

#### Jennifer Burrell

2076 Taylors Flat Road  
TAYLORS FLAT NSW 2586  
P: 02 6298 3490  
M: 0402 080 583  
E: jenburrell70@gmail.com

### Miniature Galloways

### DMB - DMB

#### Dianne & Mark Burgess

PO Box 7513  
SUTTON NSW 2620  
P: 02 6230 3415  
M: 0407 449 435  
E: dianne\_mark@bigpond.com

### Miniature Belted Galloways

### Dragon Bridge - DBS

#### Phill & Vicki Morrow

PO Box 125  
BILLINUDGEL NSW 2483  
P: 02 6684 5031  
E:

### Miniature Belted Galloways

### Earthwise Farm - EWF

#### Phillip & Kim Pisaruk

3830 Braidwood Road  
TIRRAVILLE NSW 2580  
M: 0419 280 891  
E: earthwise.farm@bigpond.com

### Miniature Galloways

### Edenvale - RKH

#### Robert & Kerry Heaslip

10 Stacey Drive  
TAREE NSW 2430  
M: 0402 125 655  
E: rkheaslip@hotmail.com

### Miniature Galloways

### Essar - NSR

#### Miss Sam Reynolds

"Nioka"  
442 Henry Lawson Way  
YOUNG NSW 2594  
P: 0400 251 508  
E: sambo\_reynolds@hotmail.com

### Belted Galloways

### Fernycreek - FCR

#### Robyn & Ray Daley

PO Box 885  
MURWILLUMBAH NSW 2484  
M: 0414 363 966  
E: robyn@beautyworld.com.au

### Miniature Galloways

### Fireglow - JOT

#### John & Joanne Tesoriero

"Wyanbah", 42 Wyanbah Road  
WHITLOW NSW 2404  
P: 02 6723 6498  
M: 0477 236 498  
E: wyanbah@bigpond.com

### Black Galloways

### Four Hill Farm - FHF

#### Kelvin & Lynelle Hill

210 Deaves Road  
MANDALONG NSW 2264  
M: 0403 253 910  
E: fourhillfarm@gmail.com

### Miniature Galloways

### Foxtail Hill - FTH

#### Troy & Kate Hepburn

45 Fig Tree Lane  
MCKEES HILL NSW 2480  
P: 02 6663 1307  
E: aliciafigtree@gmail.com

### Miniature Belted Galloways

**Galloway Magic - ACT**  
**Glynda Bluhm**  
2771 Sutton Road  
SUTTON NSW 2620  
P: 02 6230 3311  
M: 0422 733 064  
E: glynda@alpacamagic.com.au  
**Miniature Galloways**

**Glenarc - RMC**  
**Rachael Coath**  
139 Ponto Falls Road  
WELLINGTON NSW 2820  
P: 02 6845 3556  
M: 0467 174 253  
E: spotnpenny@hotmail.com  
**Miniature Galloways**

**Glen Bryan - RJB**  
**Ron & Joan Beslich**  
394 Darkes Forest Road  
DARKES FOREST NSW 2508  
P: 02 4294 3447  
M: 0411 752 441  
E: rwb@gbsinv.com.au  
**Miniature Galloways**

**Gleneagles - IRB**  
**Rhonda & Ian Bull**  
1199 Carbone Road  
CORBIE HILL NSW 2705  
P: 02 6955 6355  
M: 0428 723 184  
E: bullie49@bigpond.com  
www.bullie49.wix.com/  
gallowayminiatures

**Red and White Miniature Galloways**

**Gold Creek - PAS**  
**Pam Robinson & Suzanne Baker**  
PO Box 321 BRAIDWOOD NSW 2622  
M: 0498 767 941  
E: goldcreek12@gmail.com  
www.gorgeousgalloways.com.au  
**Miniature White Galloways**

**Golden Vale - GVG**  
**Debbie Kavanagh**  
PO Box 267  
NORTH RICHMOND NSW 2155  
M: 0412 040 412  
E: debkav@tpg.com.au  
**Red & Black Miniature & Standard Belted Galloways**

**Hillhouse Farm - HHF**  
**Ross & Denva Isles**  
PO Box 6090  
THE OAKS NSW 2570  
P: 02 4657 1570  
M: 0478 487 389  
E: denva@acenet.com.au  
**Miniature Belted Galloways and Miniature Galloways**

**Karrana - KSP**  
**Scott & Kelly Pitkin**  
PO Box 666  
TENTERFIELD NSW 2372  
M: 0427 227 106 (Scott)  
M: 0428 271 823 (Kelly)  
E: scottpitkin@hotmail.com  
**Miniature Galloways**

**Killure - LSM**  
**Lindsay & Sally Mulligan**  
"Killure" 89 Hanlan Road  
ARMIDALE NSW 2350  
M: 0411 446 243 Lindsay  
M: 0423 224 273 Sally  
E: office@minibelties.com.au  
www.minibelties.com.au  
**Miniature Belted Galloways**

**Kybella Pastures - SKY**  
**Malcolm & Annette Sky**  
178 Caniaba Road  
CANIABA NSW 2480  
P: 02 6622 2847  
M: 0412 010 865  
E: mjsky@bigpond.com  
**Miniature Galloways**

**Lallybroch - LBS**  
**Leeanne & Jason Olivieri**  
PO Box 1234  
SINGLETON NSW 2330  
P: 02 6577 5672  
M: 0421 371 639  
E: lallybrochgallowaystud@gmail.com  
**Miniature Galloways**

**LBF Miniatures - LBF**  
**Lexi McGrath**  
115 Cherry Lane  
WOLUMLA NSW 2550  
P: 02 6494 9058  
M: 0429 661 414  
E: stevemcx6@bigpond.com  
**Miniature Belted Galloways**

**Lindisfarne - LIN**  
**David & Gail Christie**  
35 Johnston Lane  
EWINGSDALE NSW 2481  
P: 02 6685 8270  
M: 0478 798 757  
E: christiebbay@yahoo.com  
**Miniature Galloways**

**Merryvale - MMB**  
**Ian & Tonia Mason**  
PO Box 145, TAMWORTH NSW 2340  
P: 02 6760 6254  
M: 0428 651 562  
E: ibtmason@northnet.com.au  
**Miniature Belted Galloways**

**Modanville Minis - MMM**  
**Greg & Bernie Booth**  
71 Numulgi Creek Road  
MODANVILLE NSW 2480  
P: 02 6628 2831  
M: 0411 152 532  
E: gregory.booth@bigpond.com  
**Miniature Galloways**

**Morview - GTM**  
**Garran & Trish Morton**  
31 Hemans Street  
GUNDAGAI NSW 2722  
M: 0429 377 749  
E: garran1971@hotmail.com  
**Miniature Galloways**

**Mootai - MTI**  
**Jenny Lanzafame & Vikki Holt**  
117 Moira Park Road  
MORISSET NSW 2264  
M: 0425 263 803 Vikki  
M: 0419 638 945 Jenny  
E: vholt@stratalinings.com.au  
E: jenny@hpmg.com.au  
**Miniature Galloways**

**Muddy Paws - MPE**  
**Richard Pamplin**  
110 Koppin Yarratt Road  
UPPER LANSDOWNE NSW 2430  
P: 02 6556 9332  
M: 0428 540 270  
E: richardpamplin@clearmail.com.au  
**Miniature Galloways**

**Oxley Island - OXL**  
**Debbie & Michael Murphy**  
700 Manning Point Road  
OXLEY ISLAND NSW 2430  
P: 02 6553 2598  
M: 0412 786 102  
E: mndmurphy@bigpond.com  
**Miniature Galloways**

**Pardy's - JPE**  
**John Engisch**  
512 Sandy Point Road  
WINDELLAMA NSW 2580  
P: 02 4844 5813  
M: 0411 349 555  
E: john@torchpublishing.com.au  
**Miniature Belted Galloways**

**Paringa Farm - PFS**  
**Drew Waterhouse**  
4782 Jerangle Road  
ANEMBO NSW 2621  
M: 0400 833 562  
E: paringafarm@gmail.com  
**Miniature Galloways**

**Puddleby - PMG**  
**Nicole McKenzie & Tony Starr**  
341 Boorowa Street  
YOUNG NSW 2594  
M: 0427 833 562 Nicole  
M: 0432 900 809 Tony  
E: nicole.mckenzie@live.com.au  
**Miniature Galloways**

**Red Ochre - ROS**  
**Pam Brown & John Maiolo**  
P: 0434 100 280  
E: pamjbrown@exemail.com.au  
**Belted Galloways**

**Romani – ROM**  
**Shane Smeathers & Will Brigham**  
"Romani Farm"  
199 Hayes Road  
MILLFIELD NSW 2325  
M: 0438 934 983  
E: traditionalgalloways@hotmail.com  
**White, Black, Dun & Red**  
**Standard & Miniature Galloways**

**7Hills - SHS**  
**Peter Munday & Alexandra Teuma**  
160 Loudon-Shand Road  
CALOOLA NSW 2795  
P: 0439 452 020  
E: pete87mun@gmail.com  
**Belted Galloways**

**Seafield - SEA**  
**Lyndal Walters**  
PO Box 217  
BUNGENDORE NSW 2621  
P: 0439 423 392  
E: lyndal.walters73@gmail.com  
**Miniature Galloways**

**Shady Pines – SEJ \***  
**Sandy & Eric Jones**  
7 Cook Drive  
SWAN BAY NSW 2324  
P: 02 4997 5371  
M: 0458 986 697  
E: shadypines01@gmail.com  
**Black, Belted & White Galloways**

**Slynfolde – RAJ**  
**Skye Stenning**  
PO Box 609  
MULLUMBIMBY NSW 2482  
P: 0423 335 398  
E: skysten2@gmail.com  
www.slynfoldegalloways.com.au  
**Miniature Galloways**

**Teatree Flat - TTF**  
**Greg & Anne Craven**  
16 Kirkoswald Avenue  
MOSMAN NSW 2088  
P: 02 9969 9368  
M: 0455 078 710  
E: vc@acu.edu.au  
**Miniature Belted Galloways**

**Thirlstane Park - TPK**  
**Robyn & Andrew Chamberlain**  
250 Woodhouselee Road  
WAYO NSW 2580  
M: 0488 039 369  
E: rjchamberlain@me.com  
**Miniature Galloways**

**Tinonee – TMS**  
**Derek & Jocelyn Siggers**  
PO Box 276  
TAREE NSW 2430  
M: 0429 692 748  
E: derek@siggers.biz  
**Miniature Galloways**

**Tumblegum – APD**  
**Alan & Pauline Dunk**  
78 Canning Close  
WAMBOIN NSW 2620  
P: 02 6238 3930  
M: 0419 291 604 Alan  
M: 0438 393 052 Pauline  
E: alan.s.dunk@gmail.com  
E: paulined.tumblegum@gmail.com  
**Miniature Galloways**

**Wadalba Community School – WCS**  
**C/- Peter Tunks**  
PO Box 294  
WYONG NSW 2259  
P: 02 4356 2888  
E: wadalba-c.school@det.nsw.edu.au  
**Miniature Galloways**

**Windaroo Farm – WND**  
**Josh Keech**  
CEDAR BRUSH CREEK NSW 2259  
P: 02 4356 1728  
M: 0413 644 604  
E: office@windaroofarm.com  
**Miniature Galloways**

## QUEENSLAND

**Bonnyglen – GMC**  
**Graham & Carol Pretsel**  
2560 Mt Mee Road  
OCEAN VIEW QLD 4521  
P: 07 3425 3135  
M: 0424 246 646  
E: gpretsetl@y7mail.com  
**Standard & Miniature Belted**  
**Galloways**

**Casuarina Creek - ORD**  
**Stephenie Mossman & Don Ordish**  
194 Beachmere Road  
CABOOLTURE QLD 4510  
M: 0405 003 510  
E: stephenie.mossman@gmail.com  
**Miniature Galloways**

**Celtic - ROB**  
**Aisling O'Brien**  
296 Boomerang Road  
TAMBORINE QLD 4270  
M: 0409 009 067  
E: ajobrien@tpg.com.au  
**Miniature Galloways**

**Cooroy Mountain - CMG**  
**Geoffrey & Tamara Hussin**  
PO Box 437  
COOROY QLD 4563  
M: 0438 242 838  
E: tamara@husso.com.au  
**Miniature Belted Galloways**

**Daneed – DAN \***  
**Danielle Taylor**  
499 Black Mountain Road  
COOROY QLD 4563  
M: 0403 023 802  
E: danielle@fireflysolutions.com.au  
**Miniature Galloways**

**Davcarol - DCL**  
**Carol & Jason Long**  
PO Box 377  
GYMPIE QLD 4570  
M: 0434 163 266  
E: cbts53@bigpond.com  
**Miniature Galloways**

**DRB Belted – DRB**  
**Douglas Baggley**  
248 Twin View Road  
ELIMBAH QLD 4516  
P: 07 5497 4695  
M: 0427 719 168  
E: ashad5@bigpond.com  
**Miniature Belted Galloways**

**Du Preez – DUP**  
**Patrick Du Preez**  
128 Hipathites Road  
KOBBLE CREEK QLD 4520  
M: 0431 057 293  
E: patrickdupreez@yahoo.com  
**Miniature Galloways**

**Eythorne Creek – ECK**  
**Scott Campbell**  
22 Winks Road  
PEAK CROSSING QLD 4306  
M: 0448 044 826  
E: scottcampbell72@hotmail.com  
**Miniature Galloways**

**Freedom Rise – FRE**  
**Baden Geeves & Raymond Cross**  
12340 D'aguilar Highway  
YARRAMAN QLD 4614  
P: 07 4163 8652  
M: 0417 859 799  
E: freedomrise@bigpond.com  
**Red & Black Miniature Belted**  
**Galloways**

**Genesis Novel – TJK**  
**Jody Reeves**  
477 Gatton Esk Road  
ADARE QLD 4343  
M: 0413 127 200  
E: jlreeves2004@yahoo.com.au  
**Miniature Galloways**

**Graceville Lodge - GLG**  
**Neil Kerr & Bruce Kady**  
Graceville Lodge  
Lot 3, Holscott Court  
SAMSONVILLE QLD 4520  
P: 07 3289 9231  
M: 0409 757 782  
E: gracelodge@bigpond.com  
**Miniature Galloways**

**Kalinda Gals – KIN  
Phil & Cass Wilson**  
PO Box 190  
MARIAN QLD 4753  
M: 0439 352 606  
E: babybluefrogs@gmail.com  
**Miniature Belted Galloways**

**McCormick – CMH  
Colin Hughes**  
451 Gatton Esk Road  
ADARE QLD 4343  
M: 0432 256 330  
E: colhughes\_7@hotmail.com  
**Miniature Galloways**

**Mini Vale – DNK  
Darren & Kim Stewart**  
149 Postmans Track  
SAMSONVALE QLD 4520  
M: 0418 788 254  
E: dmsplastering@bigpond.com  
**Miniature Galloways**

**Mt Davidson – MTD  
Bonnie Morrison & Sydney Luxford**  
TARRAGINDI, QLD 4121  
P: 0435 331 855  
E: bmorrison10@bigpond.com  
**Miniature Galloways**

**Nadinna – AMS  
Rod & Dinna Duggan**  
132/3 Robina Town Centre Drive  
ROBINA QLD 4226  
P: 07 5504 6106  
M: 0417 719 982  
E: rodduggan@gmail.com  
**Miniature Galloways**

**Rivendell Park - RDP  
Danielle Flint**  
PO Box 40, KENILWORTH QLD 4574  
P: 07 5446 0956  
M: 0427 904 645  
E: dar1@live.com.au  
**Miniature Galloways**

**Sanda – SAA  
Sarah & Andrew Hemming**  
1467 Middle Road  
PEAK CROSSING QLD 4306  
P: 07 5545 1346  
M: 0458 882 045 Sarah  
M: 0447 114 074 Andrew  
E: sandahemming@outlook.com  
**Miniature Galloways**

**Sniper Ridge – XXX  
Deanne Waine & Sandy Pickering**  
79 Ebenezer Road  
EBENEZER QLD 4340  
M: 0409 312 709  
E: sandee.pw@outlook.com  
**Miniature Belted Galloways**

**The Farm - FAR  
Adam Churchward &  
Elizabeth Inder**  
PO Box 267  
DAYBORO QLD 4521  
P: 07 3425 2499  
M: 0421 598 003  
E: lizinder@hotmail.com  
**Miniature Galloways**

**The Hermitage - THS  
Sherry Leach & Craig Coutts**  
PO Box 867  
WARWICK QLD 4370  
M: 0400 011 260  
E: homeviewmagazine@gmail.com  
**Miniature Galloways**

**Westwinds – WMG  
Kate Waddell & Andrew Papa**  
25 Westbourne Drive  
WIGHTS MOUNTAIN QLD 4520  
M: 0408 097 830  
E: katewaddell@hotmail.com  
**Miniature Belted Galloways**

**Windsong - CRS  
Russell & Christine Sims**  
136 O'Rourke's Road  
TRAVESTON QLD 4570  
P: 07 3151 3611  
M: 0403 157 868  
E: simsjs@internode.on.net  
**Miniature Galloways**

2020 Year  
Tattoo  
R

## Lazy B Galloways

Stepping out with Galloways

Breeders of Black, Dun, White,  
Red & Black Belted Galloways



Visitors always welcome.  
Luke & Emily Bonar  
126 Valley Road, Sidmouth Tas 7270  
Mobile: 0408 556 355.  
Email: lukebonar@hotmail.com

## TASMANIA

**Apple Blossom – HMF  
Heather Anderson-Farren &  
Michael Farren**  
PO Box 270  
FRANKLIN TAS 7113  
M: 0409 846 524  
E: heather.ando1@gmail.com  
**Galloways**

**Clear Vista – CLV  
Newton & Anna Maddick**  
44 Jarman Road  
NOOK TAS 7306  
P: 03 6492 3371  
M: 0428 923 371  
E: maddick6@bigpond.com.au  
**Belted Galloways**

**Glascar – DCP \*  
Denys Peters**  
3 Ritchie Avenue  
DOWNLANDS TAS 7320  
M: 0408 597 190  
E: denys.peters@gmail.com  
**Black & White Galloways**

**Glenwood - GWD  
George Cerchez**  
237 Glenwood Road  
RELBIA TAS 7258  
P: 03 6344 7883  
M: 0417 530 847  
E: george.cerchez@gmail.com  
**Miniature Belted Galloways**

**Kentish Burrows – KBS  
Bruce & Tania Smith**  
PO Box 240  
SHEFFIELD TAS 7306  
M: 0458 544 561  
E: smithbw@iinet.net.au  
**Miniature Belted Galloways**

**Kermandie - DAR  
Dion & Amy Robertson**  
PO Box 177  
GEEVESTON TAS 7116  
P: 03 6297 9999  
M: 0407 651 200  
E: amyanddion@bigpond.com  
**Belted Galloways**

**Lazy B – LJB \*  
Luke & Emily Bonar**  
126 Valley Road  
SIDMOUTH TAS 7270  
M: 0408 556 355  
E: lukebonar@hotmail.com  
**Black & Red Belted Galloways &  
Black Dun White & Red Galloways**

**Mistover – PJC  
Phillip & Marita Crombie**  
1840 Murchison Highway  
YOLLA TAS 7325  
P: 03 6438 1235  
M: 0408630048  
E: yollacrombies@bigpond.com  
www.greatplacetasmnia.com.au  
**Galloways**

**River Wild - RWD  
Isabel Beasley & Matthew  
Golding**  
4 Freedom Close  
CARLTON TAS 7173  
M: 0437 921 897  
E: beasleyisabel@gmail.com  
**Miniature Belted Galloways**

**Skytor – BCM  
Brian & Christine Medcraft**  
75 Mt Arthur Road  
PATERSONIA TAS 7259  
P: 03 6399 3325  
M: 0439 952 101  
E: bmedcraft@hotmail.com  
**Black Galloways**

**Spring Rises – SRS \*  
Andrew & Sallie Wadley**  
3480 Meander Valley Highway  
WESTBURY TAS 7303  
P: 03 6393 1253  
M: 0428 974 718  
E: springrises1@bigpond.com  
**Belted Galloways**

**Talunah - TGS  
Stephen Diprose**  
25 Kingclere Road  
EAST RIDGLEY TAS 7321  
M: 0417 517 325  
rskipper2@bigpond.com  
**Galloways**

## VICTORIA

**Amberley Park - AP \*  
Malcolm & Carol Cock**  
163 Ryans Road  
ELTHAM NORTH VIC 3095  
P: 03 9444 1112  
M: 0418 316 009  
E: farmdynamics@dcsi.net.au  
www.farmdynamics.com.au  
**Black Galloways**

**Ashdown - PHP  
Helen & Petter Collins &  
Peggy Sawdon**  
320 Forest Road  
LABERTOUCHE VIC 3816  
P: 03 5628 7549  
M: 0408 004 813  
E: phcoll@dcsi.net.au  
**Miniature Galloways**

**Balytyckle - KOW  
Sonya Heron & Martin Keays**  
439 Ti Tree Creek Road  
YEA VIC 3717  
P: 03 5780 2320  
M: 0488 196 245  
E: sonya\_heron\_bears@hotmail.com  
**Miniature Galloways**

**Barwon Downs - BDB  
Greg & Sharon Bartley**  
PO BOX 6471  
HIGHTON VIC 3216  
P: 03 5244 4422  
M: 0428 749 679  
E: barwondownsbeef@gmail.com  
**Galloways**

**Bellandean - MS  
Marshall Scott**  
Boyds Road  
FLINDERS VIC 3929  
P: 03 5989 0895  
E: mamscoptyltd@bigpond.com  
**Galloways & Belted Galloways**

**Big Country - PJF  
Peter French**  
550 Ballarto Road, SKYE VIC 3977  
P: 03 9782 2662  
E: pjfrench@bigpond.com  
**Black & Dun Galloways**

**Black Mountain - BMB  
William Schwarzenberg**  
2224 Melbourne-Lancefield Road  
MONEGETTA VIC 3433  
P: 03 5428 5567  
M: 0413 414 987  
E: swaz1972@hotmail.com  
**Miniature Belted Galloways**

**Budawang - BW  
Bob Maddern**  
7936 Murray River Road  
MT ALFRED VIC 3709  
P: 02 6037 1249  
E: rmaddern@gmail.com  
**Black & Red Belted Galloways**

**BT Belties - BTB  
Brody & Tye Young**  
345 Dawson Road  
ARCADIA VIC 3631  
P: 03 5826 7267  
M: 0409 438 954  
E: pinchofsalt@hotmail.com  
**Miniature Belted Galloways**

**Clan Woolfe - CWB  
Cameron Woolfe**  
PO Box 2398  
BAKERY HILL VIC 3354  
P: 03 5334 0588  
M: 0409 190 776  
E: clanwoolfebelties@gmail.com  
www.clanwoolfebelties.com  
**Red, Black & Dun Standard &  
Miniature Belted Galloways**

**Cloverdale - CLO  
Stephen Farmer & Amanda  
Fosang**  
97 Bittern-Dromana Road  
BALNARRING VIC 3926  
P: 03 9670 5588  
M: 0408 705 588  
E: sfarmer@eis.net.au  
**Miniature Galloways**



**Dartomjo - JHE****John Heard**

105 River Connection Road  
WILLOW GROVE VIC 3825  
M: 0425 080 195  
E: heardme@hotmail.com  
**Belted Galloways**

**Eagle Ridge - ERS****Alex Vardy**

PO Box 7, TALLANGATTA VIC 3700  
P: 02 6071 2827  
M: 0427 946 492  
E: belties@eagleridgestud.net  
www.eagleridgestud.net  
**Miniature Black & Red  
Belted Galloways**

**Furever Tails - SJS****Steven & Simone Jardine**

1703 Joel Joel Road  
CROWLANDS VIC 3377  
M: 0455 755 338 (Steven)  
M: 0400 035 456 (Simone)  
E: simone.evealyn@yahoo.com.au  
**Miniature Galloways**

**Glenblairie - AJE \*****Arie & Erica Eyles**

589 Williams Road  
KOOROCHEANG VIC 3364  
P: 03 5345 6468  
F: 03 5345 6468  
E: arie@activ8.net.au  
**Standard & Miniature Belted  
Galloways**

**Glenfine Pastoral Company - GPG****Robert Reed**

320 Hogans Road  
HOPPERS CROSSING VIC 3029  
P: 03 9748 2766  
M: 0411 087 081  
E: julieconidi@bigpond.com  
**Miniature Belted Galloways**

**Globex - GBX \*****Globex Gully Ranches Pty  
Ltd**

**Merlin & Jane Bradley**  
380 Kiewa Bonegilla Road  
TANGAMBALANGA VIC 3691  
P: 02 6027 3464  
M: 0447 273 464  
E: globex@globex-au.com  
www.globex-au.com  
**Black, Dun & White  
Galloways**

**Harkaway - HKW****Melissa & David Gittus**

PO Box 9024  
HARKAWAY VIC 3806  
P: 03 9796 8113  
M: 0408 485 087  
E: melissa@gittus.com.au  
**Belted Galloways**

**Hoddles Creek - GAM****Genevieve Castle & Michael  
Nicolazzo**

255 Eacotts Road  
HODDLES CREEK VIC 3139  
P: 03 5967 4666  
E: gcastle@live.com.au  
**Miniature Galloways & Belted  
Galloways**

**Jalaway - AWE****Alison Hilli**

105 River Connection Road  
WILLOW GROVE VIC 3825  
P: 03 5635 2383  
M: 0429 796 586  
E: jalaway@live.com.au  
www.jalawaybeef.com.au  
**Belted Galloways**

**Karandrea - RJD****Rob & Jan Davidson**

507 Albert River/Welshpool Road  
BINGINWARRI VIC 3966  
P: 03 5185 1341  
E: karandrea@skymesh.com.au  
**White Galloways & Black,  
Dun & Red Belted Galloways**

**Malcolm Cattle Company - MCO****Chris Malcolm**

254 Canterbury Road  
BAYSWATER VIC 3153  
M: 0401 693 261  
E: chris\_malcolm@rfsgroup.com.au  
**Galloways**

**Maple Garden - MGM****Kelly Franke & Shannon Dube**

790 Kancoona South Road  
KANCOONA VIC 3691  
P: 02 6028 9821  
M: 0477 709 781  
E: kelly.franke@hotmail.com  
**Miniature Belted Galloways**

**Mini Belts - NBS****Vincent & Ivy Lobosco**

165 Clegg Road  
MT EVELYN VIC 3796  
P: 03 9736 1440  
E: ivy05@optusnet.com.au  
**Miniature Belted Galloways**

**Misty Ridge - MLN****Michael & Leonie Norris**

100 Barker Road  
HARCOURT NORTH VIC 3453  
M: 0408 125 639 Leonie  
M: 0419 352 112 Michael  
E: leonie3453@outlook.com  
**Miniature Galloways**

**Murrinoak - CJA****Carole Simpson**

PO Box 3  
KANGAROO GROUND VIC 3097  
M: 0412 610 267  
E: jamkat@skymesh.com.au  
**Miniature Galloways**

**Pageoway - POG****Chelsea Filmer**

138 Pages Road  
TAMBO UPPER VIC 3885  
P: 03 5156 4707  
M: 0448 713 204  
E: ajcfilmer@bigpond.com  
**Belted Galloways**

**Riverside Mist - RSM****Kristyn Preen**

270 Riverside Drive  
WARBURTON VIC 3799  
M: 0404 429 435  
E: kristyn.preen@gmail.com  
**Miniature Belted Galloways**

**Karandrea Galloways** Binginwarri Vic



**Rob & Jan Davidson 03 5185 1341 or 0400 861 332**

**Black, Red & Dun Belteds - Black & White Galloways**

**Semen also available from Red and Black Belteds**

**Visitors Welcome      karandrea@skymesh.com.au**

**Rothwell Run  
Rick & Lisa Morrison**  
PO BOX 33  
LITTLE RIVER VIC 3211  
M: 0417 290 203 Rick  
M: 0438 290 203 Lisa  
E: rl.cottage@gmail.com  
**Galloways**

**Ruby Hill - RGS  
Cathy & Brett Grundy**  
5027 Whittlesea - Yea Road  
YEA VIC 3717  
M: 0416 174 817  
E: rubystreet@bigpond.com  
**Miniature Belted Galloways**

**Southern Cross - SX \*  
Peter & Marylou McKeon**  
PO Box 139  
DARNUM VIC 3822  
P: 03 5627 8350  
M: 0408 250 345  
E: mckeonpr@gmail.com

**South Park - RSP  
Erwin & Kaye Regli**  
5 Scotts Road  
LINDENOW VIC 3865  
P: 03 5157 1645  
M: 0427 515 716  
E: kayeregli@msn.com  
**Belted Galloways**

**Stoneywood - SWG  
Leanne Stone**  
168 Mountain View Road  
BRIAR HILL VIC 3088  
M: 0407 098 477  
E: leannestone@hotmail.com  
**Miniature Galloways**

**Stubby Creek - DCB  
Bryce Jurgens**  
5 Harrys Road  
ARTHURS CREEK VIC 3099  
M: 0409 937 247  
E: brycejurgens97@outlook.com  
**Galloways and Miniature  
Galloways**

**Tarxien Hill - TAR  
Helen Daly**  
66A Greenhill Road  
MT HELEN VIC 3350  
P: 03 5330 3848  
M: 0438 213 828  
E: hdaly@vtown.com.au  
**Belted Galloways**

**Torcroft - PAH  
Patricia Hunder**  
54 Davies Road  
BITTERN VIC 3198  
M: 0410 569 610  
E: patsun@aapt.net.au  
**Miniature Galloways**

**Trascott Park - TSC  
Trace & Scott Cockram**  
24 Walters Road  
NYORA VIC 3987  
P: 03 5659 0211  
M: 0437 365 335 (Trace)  
M: 0438 397 215 (Scott)  
E: cockram@dcsi.net.au  
**Miniature Galloways**

**Wannawin - GES \*  
Peter & Gina Sutherland**  
"Thologolong"  
4696 Murray River Road  
WODONGA VIC 3691  
P: 02 6020 2039  
M: 0409 766 426  
E: wannawin@harboursat.com.au  
**Miniature Galloways**

**Warialda - AJF  
Allen & Lizette Snaith**  
**130 Ryans Road**  
CLONBINANE VIC 3658  
P: 03 5787 1560  
M: 0408 348 732  
F: 03 5787 1600  
E: info@wbgbeef.com.au  
www.wbgbeef.com.au  
www.warialdahidegoods.com  
**Belted Galloways**

**Windy Hollow - RJA  
Rebecca & Darren Avery**  
255 Rendells Road  
WELSHPOOL VIC 3966  
P: 03 5688 1038  
F: 03 5688 1166  
E: dravery@netspace.net.au  
**White Galloways & Belted  
Galloways**

## SOUTH AUSTRALIA

**Hidden Valley - HVM  
Kimberley Mitchell**  
PO Box 502  
FARRELL FLAT SA 5416  
M: 0407 790 064  
E: aandkmitchell@bigpond.com  
**Miniature Galloways**

**Mbuyanhanda - GJH  
Geoff & Janette Williams**  
26 Mace Road  
BLAKISTON SA 5250  
M: 0407 074 303  
E: geoff\_williams59@bigpond.com  
**Miniature Galloways and  
Belted Galloways**

**Parkfield - PKF  
Ben & Sasha Crawford**  
PO Box 1578  
NORMANVILLE SA 5204  
M: 0427 392 998  
E: crawfy101@gmail.com  
**Miniature Galloways**

## WESTERN AUSTRALIA

**Emohruo - BWA \*  
Mark Bailey**  
1482 Spencer Road  
NARRIKUP WA 6326  
M: 0427 095 054  
E: mark.lynne@westnet.com.au  
**Black Galloways**

**Lockebery - BJ  
Bruce Ebery & Jane Blacklock**  
50 Karnup Creek Road  
HOPELAND WA 6125  
P: 08 9525 2850  
E: rupertebery13@hotmail.com  
**Belted Galloway**

## COMMERCIAL

**Ian & Karen Duprez**  
150 Martins Lane  
PIALLAMORE NSW 2340

**Margaret Kidd**  
292 Lowes Peak Road  
ST FILLANS VIA MUDGEE NSW 285  
M: 0428 223 098  
E: maggiesrest2@bigpond.com

**Roger & Fran Rankin**  
Unit 3, St Andrews Village  
99 Groom Street  
HUGHES ACT 2605  
P: 02 6282 0620  
M: 0401 332 999  
E: castledouglas@iinet.net.au

**M & M Kucks**  
"The Bluestone" MS 863  
MACLAGAN QLD 4352

**Jan & Ron McKinnon**  
59 Wilson Road  
TAMBORINE MOUNTAIN QLD 4272  
P: 07 5545 1346  
M: 0418 128 055  
E: oldfrogs@hotmail.com

**Christine Barnett**  
8 Jellindale Court  
HIGHTON VIC 321  
P: 03 5200 0566  
M: 0430 382 223  
E: cabert@bigpond.com

**Mr & Mrs F Dean**  
415 Wormbete Station Road  
GHERANG VIC 3240  
P: 03 5288 7380

**Joan Rofe**  
Perangiwa Farm  
100 Lemongum Road  
YELLINGBO VIC 3139

**Jan-maree Stampfli**  
PO Box 243  
COLDSTREAM VIC 3770  
P: 0419 375 872  
stampf.5@bigpond.com

# Young Members



*Amberley Park Meredith A14 and calf*

## **Troy and Kate Hepburn**   **Hannah Cock** *Foxtail Hill Stud*   *Amberley Park*

Troy and Kate have had a busy year since we reported on them in the last annual. Troy was fortunate to have a trip to Canada, where he took in the sights at the Western Agribition (largest livestock show in Canada) and no doubt picked up some handy hints for show preparation to practise on his own cattle. Troy and Kate attended the Canberra Royal Feature Show with a team of four head of miniature Belted Galloways, being awarded Reserve Senior Champion Female with Foxtail Hill Mia, Calf Champion Bull with Foxtail Hill Check Me Out! and Junior Champion Bull with Foxtail Hill Ned Kelly. To top this off Foxtail Hill Ned Kelly was awarded Grand Champion Miniature Belted Galloway Bull. A great result for all the hard work put in by Troy and Kate.

On top of this Kate has just been awarded North Coast National (NSW) Miss Teen Showgirl! Congratulations Kate!

Hannah, the co-principal of Amberley Park Beef, was asked how things had been over the last 12 months for her and her Galloways. She replied "Like most people on the land in NSW, due to drought conditions, we have had to reduce stock from 300 to 200 head of cows, and also our sheep numbers. My parents run mostly commercial Angus cows and use my Galloway and Scottish Black bulls as well as their Angus bulls. The home property is called "Strathvean" which was bought about three years ago and we haven't had a good season yet.

After the Melbourne Show last year we bought Amberley Park Landscaper (he was the 2018 Supreme Galloway exhibit there) back from Fireglow Galloways and joined him to our Galloway cows. My parents were very impressed with him, so we joined some stud Angus cows and the resulting calves have arrived all safe and sound. I

just wish we were having better seasons to show what they can do. Our old matrons have been reduced to just one, Amberley Park Meredith A14 (15 years old), and this is her last calf, a heifer by Landscaper, which is great."

Between university, horses, work and the Galloways, there is not much time for anything else. "I'm really looking forward to the end of the Uni year in November, when I can spend more time on farm and with the Galloways."

## **Chelsea Filmer** *Pageoway Stud*

Since we reported on Chelsea last year, she has been busy with preparing her cattle for some major shows. Making the long trip to the feature show at Canberra Royal in February 2019 from their East Gippsland property, Chelsea and her family presented a team of three Belted Galloways, and were awarded Calf Champion Female with Pageoway Patronus, Reserve Calf Champion Female with Bonnibelt Paprika and Reserve Junior Champion Female with Pageoway Lahdidah Nemo. A great result for the team. It was the second outing to Royal Canberra Show for Pageoway Lahdidah Nemo having been shown there the previous year as a calf as foot with her dam.

Royal Melbourne Show saw Pageoway Patronus being awarded Grand Champion



*Kate and Troy Hepburn at Royal Canberra Show 2019*

Female Belted Galloway, then going on to become the Supreme Belted Galloway Exhibit. Couldn't keep the smile from Chelsea's face! Congratulations Chelsea and the Filmer family. Keep up the good work.

## Brody and Tye Young

### BT Belties

Brody and Tye are new members to the association, but what they lack in experience they more than make up for in enthusiasm! Living near Shepparton, the Young family is not new to cattle, and looking for some cattle for the boys the family purchased four in calf heifers from the Glenblairie Stud.

Brody and Tye attended the Stud Beef Victoria handlers camp this year, making some new friends and learning lots of new things about cattle handling and show preparation. Since then, the boys have been putting into practice what they learnt at the camp. They have been teaching their heifers to tie up, halter training them and practising leading them, as well as washing and brushing. The two boys are so dedicated they have been camping out at



Chelsea Filmer, left with Pageoway Patronus and some of the broad ribbons collected at Royal Melbourne Show 2019.

night awaiting the birth of their calves! Brody (below left) and Tye (below) are pictured with their heifers, in training for local shows.

BT Belties show debut was at



Dookie Show, where the boys were overwhelmed with the interest shown in their cattle by members of the public. People were bypassing other breeds to see the miniature Belties - the first time any had been shown at the Dookie Show.

The stud went home with three Reserve Champion ribbons, as well as numerous first and second placings. In top of this the boys did very well in the young handlers classes, with Tye second in his age group, and Brody placing first in his.

Congratulations, and best wishes for your future.



Dedication from Brody & Tye Young, camping out to keep an eye on their cattle!

## The Cattle Shop

for all your cattle grooming gear

Daryl Holder



P.O. Box 418  
Goulburn NSW 2580  
Phone 02 48236442  
Mobile 0417263460  
email: [sales@thecattleshop.com.au](mailto:sales@thecattleshop.com.au)  
[www.thecattleshop.com.au](http://www.thecattleshop.com.au)



*Lexie McGrath, LBF Miniatures with Pardy's Lady Penelope*



*Ellie (below) and Lucy (above) Bonar, Lazy B Stud, treating Lazy B Milo to some turnips*



# Ode To a Cow

When life seems one too many for you,  
 Go and look at a Cow.  
 When the futures black and the outlooks blue,  
 Go and look at a Cow.  
 For she does nothing but eat her food,  
 and sleep in the meadows entirely nood,  
 Refusing to fret or worry or brood,  
 Because she doesn't know how.

...

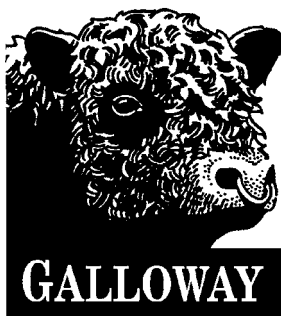
Whenever you're feeling bothered or sore,  
 Go and look at a Cow,  
 When everything else is a fearful bore,  
 Go and look at a Cow.  
 Observe her gentle and placid air,  
 Her nonchalance and savoir faire,  
 Her absolute freedom from every care,  
 Her imperturbable brow.

...

So when you're at the end of your wits,  
 Go and look at a Cow  
 Or when your nerves are frayed to bits,  
 And wrinkles furrow your brow;  
 She'll merely Moo in her gentle way,  
 Switching her rudder as if to say:  
 "Bother tomorrow! Let's Live today!  
 Take the advice of a cow!"

...

The Old Farmers Almanac



## Spring Rises Belted Galloway Stud



Andrew & Sallie  
 Wadley  
 Westbury Tasmania  
 0428 974 718  
 springrises1@bigpond.com

Visitors  
 Welcome



**BALYTYCKLE  
MINIATURE  
GALLOWAYS**  
balytyckleminiaturegalloways.com

Mob: 0488196245 Sonya  
0418326851 Marty  
Home: 03 57802320  
sonya\_heron\_bears@hotmail.com



### Insuring farmers since 1919.

For insurance tailored to your needs, call 1300 934 934 or visit [wfi.com.au](http://wfi.com.au)

Call 1300 934 934 or visit [wfi.com.au](http://wfi.com.au)



To see if our policies are right for you, please read a Product Disclosure Statement by Insurer Insurance Australia Limited ABN 11 600 016 722 AFSL 227581 trading as WFI.

**Agspand** **FEEDCHAR™** for animals  
*healthy profitable agriculture* *proud sponsors*



Agspand's FEEDCHAR™ is a quality Australian activated-charcoal dietary supplement for all animals — cattle, horses, sheep, goats, pigs, alpacas, chickens and pets. A digestive aid and toxin binder, Feedchar may assist with maintaining an animal's condition, behaviour and weight against plant toxins and high nitrates that commonly occur on and in grasses and feeds, through wet and dry seasons. Clients have seen healthier and heavier bulls, cows and calves from greater feed efficiency and nutrient uptake.



**FEEDCHAR™** a *triple Carbon Farming Process*  
**Agspand** For bulk orders, contact us via [www.agspand.com.au](http://www.agspand.com.au)

# UK Galloway Road Trip – New Opportunities

*Malcolm Cock reports on his recent trip to Scotland and Ireland...*

What a great lot of Galloway people and their cattle! I'm very lucky to be able to visit the home of the Galloway breed regularly, and even luckier this year to join a group of breeders on a trip to Ireland...you guessed it, to see Galloways! They love showing their cattle, and all I saw over there were black Galloways and Belted Galloways. There are very few dun herds and only the occasional white and red cattle.

The standard of Galloways is excellent and I feel getting better each visit. There has been a big improvement in performance with imports from Canada and Australia (Globex) over the decades, compared to my first visit in 1973. The butchers and the 'Real Galloway Meat Brand' are wanting 300-350 kg carcasses and with the growth rate in the Galloways I saw, the breeders are achieving this by 24 months of age.

A new development in marketing Galloway Beef is the 'The Galloway Gourmet Burger' which will be for sale in Aldi stores across Scotland.



*Troloss Galloways converting roughage into high quality protein. A tree plantation and Europe's second largest wind farm are in the background.*

Topics often discussed over there were Brexit and vegans. The uncertainty of the future makes planning and budgeting very difficult. Carbon credits are another worrying challenge in that grazing land is being taken up for planting trees to take advantage of carbon credits. This challenge is also coming to the forefront in Australia requiring us to get the message across to the public and government that good grazing practices can be beneficial for the environment and, as a bonus, produce high quality food.

There is a window of opportunity for the Galloway breed in the UK (depending on Brexit) with the change in the farming subsidies received by farmers from per head to per acre. This should mean that the lower maintenance cattle like Galloways will be in demand, being able to run more head of cattle per acre. The fact that the meat quality is so much better than the Euro breeds is another positive. This difference between Galloways and most other breeds was well illustrated at the Irish Tullamore Show (1 day, 60,000 people!) where most of the cattle breeds were extreme in size or muscle,



*John Finlay judging at the Tullamore Show, Ireland*

and therefore not suitable for much of the extensive grazing areas of Scotland and Ireland. It was the first time Galloways were shown at Tullamore Show and the Galloways and Belted Galloways were shown together.


The Galloway breed in Great Britain and Ireland is in very good hands, and even though those hands are getting older, there are a number of enthusiastic younger helping hands and heads involved. A big thank you to all my hosts and to Dorothy Goldie (UK Galloway Society secretary) for a most enjoyable time.



*Blackcraig Galloways. Approximately 150 breeders run and are out-wintered on hill country. They have successfully imported Australian genetics.*



*Troloss heifer weaners.*




**MBUYANHANDA**  
 Miniature Galloways & Belted Galloways

**Geoff & Janette Williams**


**Blakiston S.A. 5250**  
**M: 0407 074 303**  
**www.minicows.com.au**

**TORCROFT**  
 Miniature Galloway Stud




Producing champion cattle,  
 with excellent temperament,  
 since 2004.



Patricia Hunder  
 Mornington Peninsula, Victoria  
 patsun@aapt.net.au  
 0410 569 610



**KILLURE**  
 MINIATURE BELTED GALLOWAY STUD



*We only breed fullblood, miniature black belties  
 for show, stud or commercial purposes*

Lindsay & Sally Mulligan  
 "Killure"  
 89 Hanlan Road  
 ARMIDALE NSW 2350

Mini Heathcliff  
 116cm at 42 months

Lindsay: 0411 446 243  
 Sally: 0423 224 273  
 E: office@minibelties.com.au

*Visitors Welcome*

**www.minibelties.com.au**

Murrinoak   
 Miniature  
 Galloways

Carole Simpson  
 P.O.Box 3, Kangaroo Ground, Vic, 3097 .  
 M: 0412.610.267  
 Email: jamkat@skymesh.com.au



*"Breeding Miniature Galloways  
 in Kangaroo Ground and  
 Taggerty, Victoria"*



# Royal Show Roundup

## Royal Melbourne Show 22 Sept - 2 Oct 2018

### Belted Galloways

Junior Champion Female - A Michael - Ashleigh Natalie  
 Reserve Junior Champion Female - Heazlewood Family - Pine Gully Park Nishi  
 Senior Champion Female - A Hilli - Wombledale Erica  
 Reserve Senior Champion Female - A Michael - Ashleigh Margot  
 Grand Champion Female - Ashleigh Natalie  
 Junior Champion Bull - A Hilli - Jalaway Prince Neander  
 Reserve Junior Champion Bull - A Michael - Ashleigh Nashville  
 Senior Champion Bull - A Hilli - Whola Hut Ziggie  
 Grand Champion Bull - Whola Hut Ziggie  
 Supreme Belted Galloway Exhibit - Ashleigh Natalie

### Galloways

Senior Champion Cow - R & J Davidson - Karandrea Milly  
 Grand Champion Cow - Karandrea Milly  
 Senior Champion Bull - J & J Tesoriero - Amberley Park Landscaper  
 Supreme Galloway Exhibit - Amberley Park Landscaper

## Royal Geelong Show 18 - 21 October 2018

### Belted Galloways

Junior Champion Female - A Hilli - Jalaway Passionate Affair  
 Senior Champion Female - A Hilli - Jalaway Jewels Girl  
 Grand Champion Female - Jalaway Passionate Affair  
 Junior Champion Bull - A Hilli - Jalaway Prince Neander  
 Grand Champion Bull - Jalaway Prince Neander  
 Supreme Belted Galloway Exhibit - Jalaway Prince Neander

## Royal Toowoomba Show 28 -30 March 2019

### Miniature Belted Galloways

Calf Champion Bull - R Cross & B Geeves - Freedom Rise Pablo  
 Senior Champion Bull - R Cross & B Geeves - Dragon Bridge Hector  
 Grand Champion Bull - Dragon Bridge Hector  
 Calf Champion Female - R Cross & B Geeves - Freedom Rise Petra  
 Reserve Calf Champion Female - R Cross & B Geeves - Freedom Rise Poppy  
 Grand Champion Female - Freedom Rise Petra

### Miniature Galloways

Junior Champion Bull - Mt Davidson Stud - Gleneagles Nicholas  
 Grand Champion Bull - Gleneagles Nicholas

## Royal Bathurst Show 3 - 5 May 2019

### Belted Galloways

Junior Champion Female - P Munday & A Teuma - 7 Hills Narla  
 Reserve Junior Champion Female - P Munday & A Teuma - 7 Hills Nora  
 Senior Champion Female - P Munday & A Teuma - 7 Hills Nutmeg  
 Reserve Senior Champion Female - P Munday & A Teuma - 7 Hills Nana  
 Grand Champion Female - 7 Hills Nutmeg  
 Junior Champion Bull - P Munday & A Teuma - 7 Hills Poseidon  
 Reserve Junior Champion Bull - J Chia & G Crease - Nurrenyen Newton  
 Supreme Belted Galloway Exhibit - 7 Hills Nutmeg  
 Supreme Galloway Family Exhibit - 7 Hills Nutmeg



*Karandrea Milly*



*Amberley Park Landscaper*



*Dragon Bridge Hector*



*Gleneagles Nicholas*



*7 Hills Nutmeg*

### Miniature Belted Galloways

Senior Champion Female - G Ellem - Honeypot Emylou  
Grand Champion Female - Honeypot Emylou  
Junior Champion Bull - G Ellem - Bangalla Pluto  
Grand Champion Bull - Bangalla Pluto

### Miniature Galloways

Junior Champion Female - A & P Dunk - Tumblegum Isla  
Senior Champion Female - A & P Dunk - Tumblegum Lorna  
Grand Champion Female - Tumblegum Lorna  
Junior Champion Bull - A & P Dunk - Tumblegum Gordon of Honeypot  
Senior Champion Bull - I Bull - Gleneagles Mondeo  
Grand Champion Bull - Tumblegum Gordon of Honeypot  
Supreme Miniature Galloway Exhibit - Tumblegum Lorna  
Small Breeds Supreme Exhibit - Tumblegum Lorna



*Bangalla Pluto*

## Royal Queensland Show 9 - 18 August 2019

### Miniature Galloways

Senior Champion Female - Mt Davidson Stud - Romani Liberty  
Senior Champion Bull - C Coutts & S Leach - The Hermitage Noah  
Reserve Senior Champion Bull - Mt Davidson Stud - Gleneagles Nicholas  
Grand Champion Exhibit - Romani Liberty



*Tumblegum Lorna*

## Royal Melbourne Show 21 Sept - 1 Oct 2019

### Belted Galloways

Junior Champion Female - C Filmer - Pageoway Patronus  
Reserve Junior Champion Female - A Hilli - Jalaway Prestigious Affair  
Senior Champion Female - C Filmer - Pageoway Lahdidah Nemo  
Reserve Senior Champion Female - A Hilli - Jalaway Passionate Affair  
Grand Champion Female - Pageoway Patronus  
Junior Champion Bull - A Hilli - Jalaway Playboy Affair  
Reserve Junior Champion Bull - J Heard - Jalaway Prince PP  
Senior Champion Bull - A Hilli - Jalaway Prince Neander  
Grand Champion Bull - Jalaway Playboy Affair  
Supreme Belted Galloway Exhibit - Pageoway Patronus



*Romani Liberty*

### Galloways

Senior Champion Cow - R & J Davidson - Karandrea Milly  
Grand Champion Cow - Karandrea Milly



*Pageoway Patronus*



*Jalaway Playboy Affair*



*The Hermitage Noah*



*Karandrea Milly*



*Jalaway Prince Neander*



*Pageoway Lahdidah Nemo*

# Agistment Guidelines

*Agistment can provide welcome relief to your property and your cattle herd in times of hardship, offering feed in dry conditions or safety to your herd in fire or flood conditions...*

Biosecurity is an important factor these days, underpinning many accreditations. It is crucial to bear in mind that all livestock movements, will pose an added biosecurity risk to your herd and must be taken into consideration. (The 2017/18 Annual included an article about biosecurity and LPA NVD's – please contact the office if you'd like a copy of the article.)

Following are some recommendations for you to consider when agisting stock or, alternatively, leasing land for people to agist their cattle.

## *Preparation*

Agisters should conduct a pre-agreement inspection of the agistment property and check for contaminated sites or potential chemical exposure on the property. Enquiries should also be made about other livestock on the property and the health status of these animals. Local government veterinarians could be contacted to discuss potential disease risks in the area.

Landholders could request an Animal Health Declaration before accepting livestock. The Animal Health Declaration provides information about the health status of your incoming herd.

## *A written agreement*

A written agreement between the agister and the landholder should be put in place. A written agreement helps to mitigate risks to both the agister and the landholder in the event of a dispute. The document should cover who is responsible for the health of the livestock, including in the event of a disease outbreak or natural disaster. The document should also outline who is responsible for updating the NLIS database when stock move and which NVDs should be used, (based on the relevant state or territory legislation). The document could also cover who is responsible for replacing lost NLIS devices or applying new devices to livestock born on the property, as well as any agreed minimum biosecurity requirements (e.g. quarantine periods, disease and parasite treatments).

## *Arrival at agistment property*

When your livestock arrive at an agistment property, provide an Animal Health Declaration

and NVD to the landholder (depending on state or territory legislation). The landholder may wish to quarantine your cattle on arrival. Also bear in mind a change in pasture composition and therefore change in diet may have an effect on the health of your cattle.

## *Returning home*

Quarantine returning cattle from other animals on your property for at least 21 days. During this time, monitor the cattle for disease and parasites, or an associated spread of weeds which may be brought in with them from the agistment property. A quarantine yard is ideal, but a smaller, secure paddock would be sufficient to contain any introduced weeds and to keep cattle separate from others on your property.

## *LPA requirements*

As previously mentioned, all LPA accredited producers must comply with the LPA Rules and Standards which includes having a property biosecurity plan for their PIC. For LPA accredited producers who are agisting or leasing, there are a couple of options:

1. If the landholder is also LPA accredited, the agister can use the landholder's NVD for moving animals off the property for sale, slaughter or to another property. It is then the landholder's responsibility to meet LPA standards, including having a property biosecurity plan. This plan should include any agisted livestock as part of its risk management.
2. The agister can obtain their own, separate LPA accreditation and access their own NVDs for the agistment PIC. This additional LPA account in the agister's name is then subject to the LPA standards and is auditable. The agister will need to have their own biosecurity plan for this property. This option will be most suitable for long-term lease agreements, or where the agister is managing the entire property, or where the landholder is not LPA accredited.



Finish con

# Semen List

<b>Section A Available Sires, no permit required for registration of calves.</b>			
<b>Name of Sire</b>	<b>Colour</b>	<b>Price per straw GST Inclusive</b>	<b>Contact</b>
Ashleigh Grason	Black Belted	\$20	Bovine Breeders P: 02 6775 1231
Braveheart of Gall-way*	Black	\$66	Chris McIlroy, Agri-Gene P: 03 5722 2666 E: chris@agrigenes.com.au
Clanfingon Limelight*	Black Belted	\$55	Judith McKinnon P: 08 8389 4401 E: mckinnonjudith@ymail.com
Clanfingon Nixen*	Black Belted	\$55	Judith McKinnon P: 08 8389 4401 E: mckinnonjudith@ymail.com
Du Rapide Legacy 17K (CAN)*	Black Belted	POA	Simone Lagace P: +1 405 799 5117
Grandview Grantley*	Black Belted	POA	Anne Wilson P: 0418 139 621 E: anne.w5@bigpond.com
Grandview Hecta*	Black Belted	POA	Anne Wilson P: 0418 139 621 E: anne.w5@bigpond.com
Grandview Joshua*	Black Belted	POA	Anne Wilson P: 0418 139 621 E: anne.w5@bigpond.com
Hawkshead Lynwood Harry	Dun	\$20	Bovine Breeders P: 02 6775 1231
Kilworth Dougal J	Black Belted	\$20	Bovine Breeders P: 02 6775 1231
Midfern Norman	Black Belted	\$20	Bovine Breeders P: 02 6775 1231
Mochrum Huckleberry*	Red Belted	\$55	Chris McIlroy, Agri-Gene P: 03 5722 2666 E: chris@agrigenes.com.au
Wilkamdai Zikomo* Eligible for export to NZ, USA, Canada, Brazil, Norfolk Is & S Africa	Black Belted	\$22.50 Export POA	Cameron Woolfe P: 0409 190 776 P: 03 534 0588 E: clanwoolfebelties@gmail.com

\* DNA Fingerprint recorded.

\*\* Mannosidosis Status Unknown. All progeny must be tested clear prior to registration.

**Rhonda & Ian Bull**  
P: 02 6955 6355 M: 0428 723 184

**Gleneagles**



**GALLOWAY**

**Mini Stud**

1199 Carbone Road  
CORBIE HILL NSW 2705

Email: [bullie49@bigpond.com](mailto:bullie49@bigpond.com)

<http://bullie49.wixsite.com/gallowayminiatures#home/mainPage>



<b>Section B Privately owned sires, sire permit required for registration of calves.</b>			
<b>Name of Sire</b>	<b>Colour</b>	<b>Price per straw GST Inclusive</b>	<b>Contact</b>
Anderson Hill Jackson	Black Belted	\$55, min 5 includes SP	Arie Eyles P: 03 5345 6468 E: arie@activ8.net.au
Budawang Max	Black Belted	\$22 SP \$55	Chris McIlroy, Agri-Gene, P: 03 5722 2666 E: chris@agrigenec.com.au
Glen Eagles Grande G2 (Min)	White with Red points	\$65 each or 11 for \$650 includes SP	Ian Bull P: 0428 723 184 E: bullie49@bigpond.com
Glen El Rusty D2 (Min)	Red	\$65 each or 11 for \$650 includes SP	Ian Bull P: 0428 723 184 E: bullie49@bigpond.com
Glenkiln Dynamite (UK)*	Black	\$25 includes SP	Merlin Bradley P: 02 6027 3464 E: globex@globex-au.com Agri-Gene P: 03 5722 2666
Globe Magnet (CAN)	Black	\$11 SP \$550	Amberley Park P: 03 9444 1112 Agri-Gene P: 03 5722 2666
Globex Kingpin 57K	Black	\$25 includes SP	Merlin Bradley P: 02 6027 3464 E: globex@globex-au.com Agri-Gene P: 03 5722 2666
Globex Kings Crown 42K	Black	\$10 SP \$50	Mark Bailey P: 0427 095 054 Farmwest P: 08 9726 2626
Globex Quota 39Q*	Black	\$25 includes SP	Merlin Bradley P: 02 6027 3464 E: globex@globex-au.com Agri-Gene P: 03 5722 2666
JR Hotshot	Red	\$49.50 inc SP	Robert Maddern P: 02 6037 1249
Oradala Red Ochre Mountain*	Red Belted	POA	Pam Brown P: 0434 100 280
Rough Rider Extra (USA)	Black	POA	Amberley Park P: 03 9444 1112
Wannawin Casper (Min)*	Dun	\$50 Includes SP	Peter & Gina Sutherland P: 02 6020 2039
Wannawin Chocolate Soldier (Min)	Dun	\$100 inc SP	Peter & Gina Sutherland P: 02 6020 2039
Wilkam dai Giovanni 97M (Min)*	Miniature Black Belted	POA	Cameron Woolfe P:0409 190 776 P: 03 5334 0588 E: clanwoolfebelties@gmail.com
Amberley Park Batman	Black	POA	Amberley Park P: 03 9444 1112
Amberley Park Bullseye V18*	Black	POA	Amberley Park P: 03 9444 1112
Amberley Park Ever Ready	Black	POA	Amberley Park P: 03 9444 1112
Amberley Park Hilton	Black	POA	Amberley Park P: 03 9444 1112
Amberley Park Hunter	Black	POA	Amberley Park P: 03 9444 1112
Amberley Park Impact	Black	POA	Amberley Park P: 03 9444 1112
Amberley Park Magic	Black	POA	Amberley Park P: 03 9444 1112
Amberley Park Masterpiece	Black	POA	Amberley Park P: 03 9444 1112
Amberley Park Rambo	Black	POA	Amberley Park P: 03 9444 1112
Balytyckle Magnum Force (Min)*	Miniature White	\$60 Includes SP	Sonya Heron P: 0488 196 245 Pregrite Genetics P: 0408 360 295
Fork Farm Loyalist (NZ)**	Black	POA	Amberley Park P: 03 9444 1112
Fork Farm Midas (NZ)**	Black	POA	Amberley Park P: 03 9444 1112

\* DNA Fingerprint recorded.

\*\* Mannosidosis Status Unknown. All progeny must be tested clear prior to registration.

<b>Section B Privately owned sires, sire permit required for registration of calves.</b>			
Glenayr Cassanova C5 (Min)*	Miniature Black	\$50	Phil Venton P: 0419 733 276
Gleneagles Grande G2 (Min)*	Miniature White	\$65 11/\$650 Includes SP	Ian Bull P: 02 6955 6355 E: bullie49@bigpond.com
Glen El Rusty D2 (Min) *	Miniature Red	\$65 11/\$650 Includes SP	Ian Bull P: 02 6955 6355 E: bullie49@bigpond.com
Globex Midnight 30M	Black	POA	Amberley Park P: 03 9444 1112
Repute of Castlemilk**	Dun	POA	Amberley Park P: 03 9444 1112
Romani Ketchican (Min)*	Miniature White	\$60 Includes SP	Sonya Heron P: 0488 196 245 Pregrite Genetics P: 0408 360 295
Rowsley Park Red Ripper*	Red Belted	POA	Rob & Jan Davidson P: 03 5185 1341 E: karandrea@skymesh.com.au
Wannawin Hamish (Min)*	Miniature Black	\$50 Includes SP	Peter & Gina Sutherland P: 02 6020 2039
Wannawin Waratah Laddie (Min)*	Miniature Red	\$100 Includes SP	Peter & Gina Sutherland P: 02 6020 2039
Wannawin Xavier (Min)*	Miniature Dun	\$50 11/\$500 Includes SP	Shane Smeathers P: 0438 934 983 E: traditionalgalloways@hotmail.com

\* DNA Fingerprint recorded.

\*\* Mannosidosis Status Unknown. All progeny must be tested clear prior to registration.

*Services offered:*

- Complete Artificial Insemination (AI) Work
- Pregnancy Testing
- Breed Plans and Advice
- Buy and Sell Semen and Storage
- 24/7 Cattle and Pregnancy Advice Line
- Calving Assistance
- Calf Marking
- AI and Cattle Health Merchandise



**Garth Matthews    0408 360 295**

*Based in Central Victoria      Email: [pregritegenetics@yahoo.com.au](mailto:pregritegenetics@yahoo.com.au)*

Published By:

Australian Galloway Association Inc.  
PO Box 42, Westbury, Tasmania  
P: 0400 952 510  
INT: +61 400 952 510  
E: [office@galloway.asn.au](mailto:office@galloway.asn.au)  
[www.galloway.asn.au](http://www.galloway.asn.au)

The views expressed in this publication are not necessarily the views of the Australian Galloway Association Inc. or its members.

The editors assume no responsibility whatsoever for the correctness, contents, use or interpretation of advertisements.

Printed at John Temple Gallery  
103 Meander Valley Road Westbury [www.johntemplegallery.com.au](http://www.johntemplegallery.com.au)





[www.galloway.asn.au](http://www.galloway.asn.au)